



DEMOGRAPHIC RESEARCH

A peer-reviewed, open-access journal of population sciences

DEMOGRAPHIC RESEARCH

VOLUME 40, ARTICLE 29, PAGES 835–864

PUBLISHED 9 APRIL 2019

<https://www.demographic-research.org/Volumes/Vol40/29/>

DOI: 10.4054/DemRes.2019.40.29

Research Material

**Costa Rican mortality 1950–2013:
An evaluation of data quality and trends
compared with other countries**

Dana A. Gleit

Magali Barbieri

Carolina Santamaría-Ulloa

© 2019 Dana A. Gleit, M. Barbieri & C. Santamaría-Ulloa.

This open-access work is published under the terms of the Creative Commons Attribution 3.0 Germany (CC BY 3.0 DE), which permits use, reproduction, and distribution in any medium, provided the original author(s) and source are given credit.

See <https://creativecommons.org/licenses/by/3.0/de/legalcode>.

Contents

1	Introduction	836
2	Data and methods	841
2.1	The Human Mortality Database protocol to construct life tables	841
2.2	Assessing data reliability through internal consistency checks	842
2.3	Assessing data reliability through external consistency checks	844
3	Evaluation of data quality	844
3.1	Age misreporting	844
3.1.1	Age heaping	844
3.1.2	Age exaggeration	847
3.2	Relative completeness	848
3.3	Comparing Costa Rica mortality estimates across all sources	850
4	Mortality trends compared with other countries	853
4.1	Life expectancy at birth (e_0)	853
4.2	Life expectancy at age 80 (e_{80})	854
4.3	Relationship between child and older-age mortality	856
4.4	Pattern of mortality at higher ages in comparison with Sweden	857
5	Intercountry comparisons with LAMBdA life tables	857
6	Conclusion and discussion	858
7	Acknowledgements	859
	References	860

Costa Rican mortality 1950–2013: An evaluation of data quality and trends compared with other countries

Dana A. Gleit¹

Magali Barbieri²

Carolina Santamaría-Ulloa³

Abstract

BACKGROUND

Mortality estimates from various sources suggest that Costa Ricans experience record-high life expectancy at birth in Latin America and higher longevity than the populations of many high-income countries, although there is some uncertainty as to the reliability of those estimates.

OBJECTIVE

We construct a life table series for Costa Rica to assess the quality of national demographic statistics for the period 1950–2013 and to determine whether reliable mortality estimates can be directly calculated from this data.

METHODS

We apply the methods from the Human Mortality Database (HMD) to national statistics to construct the Costa Rica life table series without adjusting for data quality. We also validate our results through internal consistency by evaluating the plausibility of the mortality patterns and its change over time and through external consistency by comparing our results with those from other sources.

RESULTS

Our mortality estimates for Costa Rica tend to be lower than others, especially for the period before 1970. They also produce a suspicious age pattern of mortality, with low adult and old-age mortality relative to the infant and child mortality, casting doubt on the quality of national demographic data.

¹ Georgetown University, Washington, DC, USA, and University of California, Berkeley, USA. Email: dglei@sonic.net.

² University of California, Berkeley, USA, and Institut national d'études démographiques (INED), Paris, France.

³ Instituto de Investigaciones en Salud, Universidad de Costa Rica, San Pedro, Costa Rica.

CONCLUSIONS

Other organizations have produced mortality estimates for Costa Rica that are higher than our unadjusted estimates, but it is difficult to evaluate the accuracy of the available estimates.

CONTRIBUTION

This analysis provides a more thorough evaluation of data quality issues regarding Costa Rica mortality than previously available. Unadjusted life tables by sex for 1950–2013 are included as [supplemental material](#), together with the raw data upon which those life tables are based and with links to the detailed methods protocol implemented.

1. Introduction

Costa Ricans are among the longest-lived people in Latin America. Based on the United Nations Population Division (UNPD) estimates for 2010–2015, life expectancy at birth (e_0 , both sexes combined) in Costa Rica was 79.2 years, far higher than for Central America as a whole (75.8) and surpassed by no other country within the Latin American and Caribbean (LAC) region (United Nations, Department of Economic and Social Affairs, Population Division 2017). The UNPD estimates suggest that e_0 in Costa Rica also exceeds that of the US population (78.9). This situation would be quite remarkable if it were accurate. How much credence we can give to such comparisons depends on the reliability of the estimates and the quality of the underlying data. Our purpose in this paper is to determine the degree of reliability of the mortality indicators derived from national demographic statistics using direct estimation methods, that is without adjustment.

Costa Rica has collected detailed vital registration and census data for more than 100 years. The first population census was conducted in 1864 and the vital registration system was created in 1883, when the Statistics and Census Directorate was established. The UN Statistics Division (UNSD) reports that death registration in Costa Rica was 97% complete in 2016 (United Nations Statistics Division 2017). For the 1950s, other estimates suggest that Costa Rica had higher relative completeness of death registration (92% in 1956) than most other LAC countries (with a low of 46% for Nicaragua in that same year); only Argentina and Chile fared better (Palloni, Pinto-Aguirre, and Beltrán-Sánchez 2015). After 2000, only four countries in the LAC region (Argentina, Brazil, Chile, and Uruguay) surpassed Costa Rica (98% in 2005) in terms of relative completeness. Census coverage, evaluated using indirect methods, increased from 83% in 1956 to 96% in 2000 but then declined again in the most recent census to 93% (Borges and Sacco 2016). Among the 20 Latin American countries considered,

only Cuba and Uruguay consistently outperformed Costa Rica in terms of census coverage throughout the period since 1950 (Borges and Sacco 2016).

One indicator of data quality is the degree of uncertainty in mortality estimates. Here we consider variations in mortality indicators for Costa Rica over the whole age range (i.e., estimates of life expectancy at birth, e_0) and at high ages (i.e., life expectancy at age 80, e_{80}), where many problems of data quality are concentrated (both in terms of coverage and accuracy, regarding age, for instance). We know of five different sets of life table series for Costa Rica. They have been produced by the *Instituto Nacional de Estadística y Censos* in collaboration with the *Centro Centroamericano de Población* at the *Universidad de Costa Rica* (INEC-CCP); the United Nations Population Division (UNPD); the Latin American Mortality Database (LAMBdA); the World Health Organization (WHO); and the Institute for Health Metrics and Evaluation-Global Burden of Disease program (GBD). While the INEC-CCP estimates are directly constructed from vital statistics and census-based population data using classic demographic techniques, the LAMBdA and GBD estimates are indirectly estimated using a complex set of methods developed by demographers at LAMBdA (Beltrán-Sánchez et al. 2018) and by statisticians at the GBD (Wang et al. 2016).

The estimates for Costa Rica published by the UNDP were prepared by the Latin American and Caribbean Demographic Centre (CELADE) at the Economic Commission for Latin America and the Caribbean, which is the Latin American office of the United Nations. CELADE constructed abridged life tables by sex for all census years using the census population combined with birth and death counts from the vital statistics system. Life tables for each five-year period were estimated by linear interpolation on the probabilities of dying at each age from the life tables centered on the censuses. Postcensal life tables were built by interpolation between the last census-based mortality estimates (those for 2011 in the case of Costa Rica) and a ‘life limit table’ believed to represent the mortality pattern that will be achieved by 2050 (see Latin America and the Caribbean Demographic Observatory 2007: 239–242, for a detailed description of the methods used by CELADE for their mortality estimates and projections).

LAMBdA estimates have been adjusted for relative completeness and age misreporting (Beltrán-Sánchez et al. 2018). More specifically, the life tables available in LAMBdA have been constructed in three separate steps: 1) Infant and child mortality were estimated by modeling (using local area regressions and splines) from a combined set of national values obtained from direct estimation based on birth histories in nationally representative surveys and indirectly estimated from the census and adjusted vital statistics; 2) Adult mortality was estimated by first adjusting census data for completeness using the General Growth Balance method, then relying on these to adjust

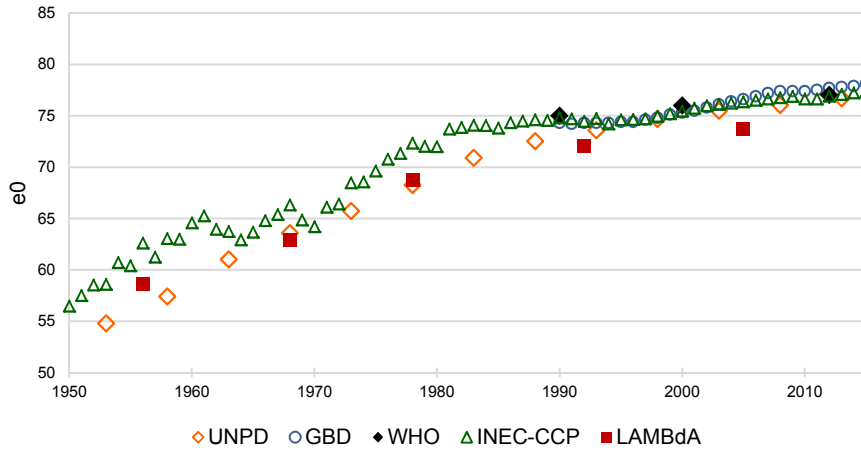
for completeness of death registration using the Synthetic Extinct Generation method, and, finally, correcting for age misstatement assuming a systematic pattern of overstatement; and 3) Mortality estimates for ages below 5 derived from the first step were combined with mortality estimates for ages 5 and above derived from the second step to produce a full set of age-specific death rates and from those, complete life tables.

The methodological procedures followed by other producers of life table estimates for Costa Rica (namely WHO and the GBD) are poorly documented. What the documentation suggests is that all appear to have used the same source of raw data, meaning vital statistics and population estimates or census data published by INEC-CCP. The general process followed within the GBD relies on statistical modeling following the Bayesian approach, but the specific model implemented was too poorly documented for reproducibility at the time this article was prepared. The rest of this paper will thus place greater emphasis on the comparison between our own estimates and those from the UNPD and LAMBdA rather than those from WHO and the GBD.

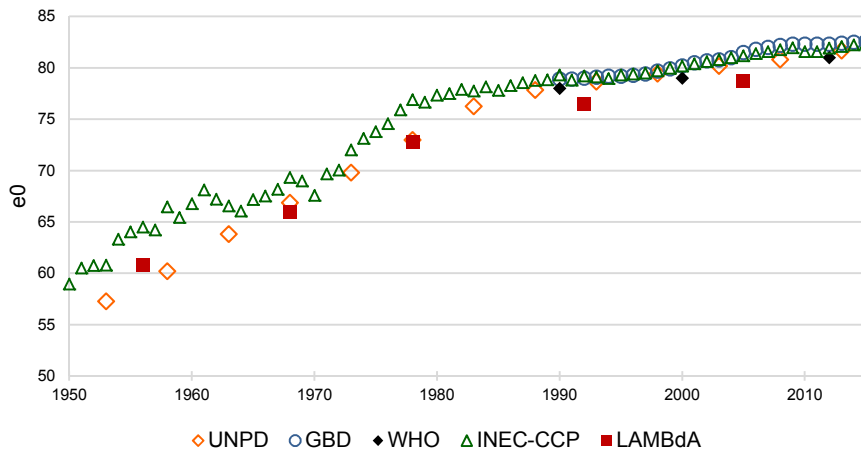
Figures 1 and 2 compare the values of e_0 and e_{80} by sex and calendar year from these various sources. The UNPD and LAMBdA estimates of life expectancy at birth and at age 80 are much lower than the corresponding estimates from INEC-CCP and the GBD, though there is increasing convergence across all sources over time. Since 2000, the UNPD estimates for e_0 differ from the INEC-CCP estimates by less than one year, compared to more than 6 years in the 1950s and early 1960s, but the LAMBdA estimates for 2005 are still more than 2.5 years lower than the official estimates. For e_{80} , the LAMBdA estimates continue to be 1.7 (for women) to 1.8 (for men) years lower at this later date. Nonetheless, taken together, these estimates suggest that Costa Rica has experienced a dramatic increase in survival over the past 65 years, particularly during the period from 1950 to 1975, but the reliability of these mortality trends depends on the quality of the underlying data.

Figure 1: Estimates of life expectancy at birth (e_0) for Costa Rica, 1950–2015, by sex

a) Males



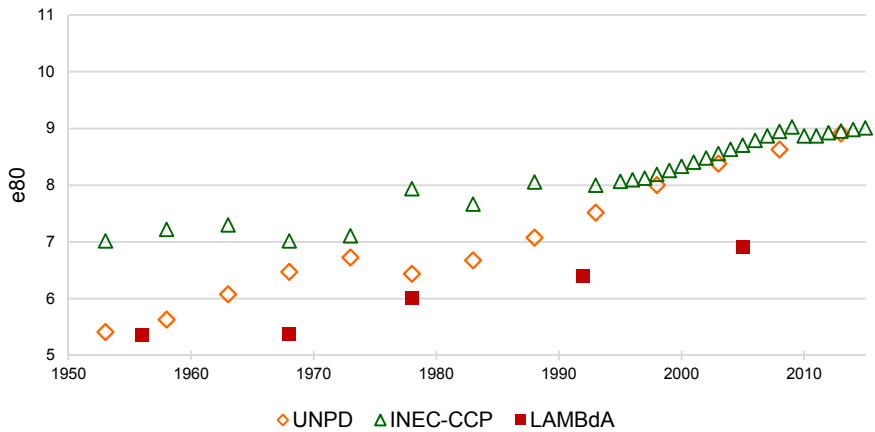
b) Females



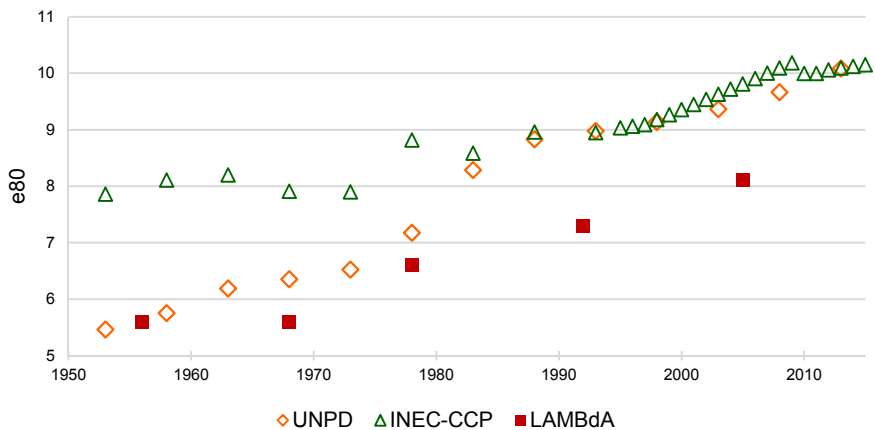
Note: Estimates from the UNPD are based on life tables for 5-year periods and are plotted at the midpoint of the period.
Source: UNPD (United Nations, Department of Economic and Social Affairs, Population Division 2015); GBD (Institute for Health Metrics and Evaluation 2016); WHO (World Health Organization 2014); INEC-CCP (Instituto Nacional de Estadística y Censos 2009, 2017a); and LAMBdA (Palloni, Pinto-Aguirre, and Beltrán-Sánchez 2016).

Figure 2: Estimates of life expectancy at age 80 (e80) for Costa Rica, 1950–2015, by sex

a) Males



b) Females



Note: Estimates from the UNPD and INEC-CCP (prior to 1995) are based on life tables for 5-year periods and are plotted at the midpoint of the period.

Sources: UNPD (United Nations, Department of Economic and Social Affairs, Population Division 2015); INEC-CCP (Centro Centroamericano de Población 2017c; Instituto Nacional de Estadística y Censos 2017a); and LAMBdA (Palloni, Pinto-Aguirre, and Beltrán-Sánchez 2016).

The objectives of this paper are to: (1) evaluate the data quality of mortality estimates for Costa Rica 1950–2013 using standard methods applied to the official vital statistics and population counts without making further adjustments, and (2) compare the estimates with those produced by others (in some cases based on adjusted data) and with corresponding estimates for the 38 countries that were included in the Human Mortality Database (HMD) at the time the Costa Rican data series was constructed.

The HMD is an international repository of mortality series for (currently 40) countries with high-quality data produced by a collaboration between the Department of Demography at the University of California, Berkeley, and the Max Planck Institute for Demographic Research (MPIDR) in Rostock (for details, see Barbieri et al. 2015). Starting in 2006, the project has also benefited from continuous support by the French Institute for Demographic Studies. Since its debut in 2002, the HMD has provided detailed mortality and population data to all those interested in the history of human longevity. With 50,000 registered users and over 5,000 publications citing the database as a main data source, the HMD is a leading resource for mortality research. The methods used in the HMD have become the gold standard to produce historical mortality indicators for countries with demographic data of good quality. One of the main advantages of the HMD is the standardized protocol used to construct life tables for all countries and time periods. Because the original data used to produce the HMD series are also published on the website (www.mortality.org), the whole process is transparent. Here, we applied the HMD process to evaluate the mortality data for Costa Rica. Though the HMD protocol cannot yield accurate mortality estimates for a country with defective data, the well-documented methodology can reveal questionable or implausible patterns. Indeed, the final goal of our study is not to produce a life table series that is as accurate as possible but to use it as an instrument to assess the reliability of national demographic statistics.

2. Data and methods

The HMD methods protocol relies on classic demographic techniques (Wilmoth et al. 2017). The basic data used to construct mortality estimates are directly collected from national statistics offices.

2.1 The Human Mortality Database protocol to construct life tables

In principle, the raw data collected for the HMD (i.e., vital statistics and census counts or official population estimates) is not adjusted, though it might have been corrected for

under- or overcount by the national statistics offices before publication. Following the HMD protocol, birth counts by sex are used mainly for estimating the relative size of individual cohorts. Death counts by sex and detailed age are used for the numerator of the age-specific mortality rates. Deaths, births, and population counts – also by sex and detailed age – are used to derive exposure counts below age 80 years. At age 80 and above, in part to account for lower data quality in most countries and for most historical periods, exposures-to-risk are estimated through a combination of the Extinct Cohort method and the Survival Ratio method that rely on the cohort-specific death counts. At very high ages (95+ years or below if there are fewer than 100 men or women surviving in any given country-year), the mortality rates are smoothed (to avoid the large random fluctuations associated with small numbers) using a technique initially proposed by Vaino Kannisto (Thatcher, Kannisto, and Andreev 2002). At these high ages, the underlying hazards are estimated by fitting a logistic curve with an asymptote at one to the age-specific mortality rates. The resulting age-specific death rates are combined to derive complete life tables by sex using conventional demographic formulas.

The raw data for Costa Rica (see Supplementary archive, S1. Raw “Input Data” for Costa Rica) comprises official vital statistics, population estimates, and census counts available online (Centro Centroamericano de Población 2017a, 2017b; Palloni, Pinto-Aguirre, and Beltrán-Sánchez 2016). Since 1950, Costa Rica has conducted censuses on a regular basis (i.e., in 1950, 1963, 1973, 1984, 2000, and 2011). For the purpose of computing mortality rates and life tables, we use the official annual population estimates published by INEC-CCP rather than the original census counts. To produce these estimates, INEC-CCP adjusts for the underregistration of deaths, estimated net migration, age misreporting, and census underenumeration. The INEC-CCP population estimates are constructed using backward projection, starting with the estimated population in 2011 – which has been adjusted for age misreporting and the undercount in the 2011 census – and using estimates of net migration and death counts that have been adjusted for underregistration (Rosero-Bixby, personal communication, November 2, 2016). We use the official census counts only for comparison. Our unadjusted life tables for Costa Rica (see Supplementary archive, S2. Unadjusted Life Tables for Costa Rica) were calculated following the HMD Methods Protocol, Version 5 (Wilmoth et al. 2007).

2.2 Assessing data reliability through internal consistency checks

We begin our data quality evaluation by graphing population and census counts by single year of age to visualize age-heaping patterns. Then, we review external evidence regarding problems of age exaggeration and use the intercensal cohort method (Elo and

Preston 1994) for diagnosing age exaggeration (see Supplementary archive, S3. Intercensal Cohort Method for details). Next, we evaluate relative completeness using Death Distribution Methods (DDM).

Death Distribution Methods are designed to estimate the completeness of death registration relative to population counts. The two most well-established methods are the General Growth Balance method (GGB, Brass 1975; Hill 1987; Hill, You, and Choi 2009) and the Synthetic Extinct Generation method (SEG, Bennett and Horiuchi 1981; Bennett and Horiuchi 1984). Hill, You, and Choi (2009) have also developed a hybrid method (GGB-SEG), which addresses the sensitivity of the SEG method to changes in coverage between consecutive censuses. Palloni, Pinto-Aguirre, and Beltrán-Sánchez (2015) evaluate 12 different methods of estimating relative completeness and conclude that, in most cases, GGB-SEG performs best. Palloni, Beltrán-Sánchez, and Pinto-Aguirre (2017) also propose a procedure that uses all the plausible estimators from such methods, which they argue leads to more robust and conservative hypothesis tests than relying on a single estimate. Hill, You, and Choi (2009) also conclude that in populations not affected by migration, it is best to use GGB-SEG, fit to the age range 5+ to 65+ because age misreporting is more of a problem above age 65, independently from the issue of completeness per se. In populations substantially affected by migration, Hill, You, and Choi (2009) argue that the GGB and GGB-SEG methods underestimate coverage (thus, overestimating mortality), whereas the SEG method does the opposite. Thus, in the case of migration, they find the best strategy (i.e., smallest error) is to fit both GGB and SEG to the age range 30+ to 65+ and then average the results (Hill, You, and Choi 2009). Using this higher starting age reduces the effects of migration, which tends to be concentrated at younger ages.

We used the DDM R package (Lima, Queiroz, and Riffe 2016) to compute the GGB and GGB-SEG estimates of relative completeness, fitted to three age ranges: 5+ to 65+; 30+ to 65+; and the ‘optimal’ age range as determined by the DDM package. We assess relative completeness based on the official population estimates rather than the original census counts because we rely on the former rather than the latter for the purpose of computing our life tables. These population estimates have already been adjusted by the national statistics office for census underenumeration, although the death counts have not been corrected for underregistration. Thus, our estimates may suggest lower relative completeness than they would if we had used the original census counts as inputs because the denominators have been inflated whereas the numerators have not, thus creating a numerator/denominator bias.

Hill, You, and Choi (2009) conclude that these methods work very well when the only errors in the data are those for which the methods were developed. According to Hill, You, and Choi (2009), both the GGB and GGB-SEG methods do reasonably well in the presence of age misreporting or age variation in census coverage. Unfortunately,

the method is not robust when there is significant net migration or when the completeness of death registration varies by age, as these phenomena can create large distortions (double-digit percentage errors in adult mortality probabilities). While these methods can be adapted to account for migration, it is rare that estimates of net migration are accurate enough to be useful (IUSSP-UNFPA 2017a, 2017b). Net migration is often low enough to ignore when dealing with national populations, but caution should be exercised in interpreting the results if there is a substantial net migration (IUSSP-UNFPA 2017a, 2017b). Furthermore, the fundamental assumptions underlying these methods are often unrealistic, resulting in erroneous results (Li and Gerland 2016).

2.3 Assessing data reliability through external consistency checks

We assess the external plausibility of the life table estimates by comparing our unadjusted estimates of e_0 and e_{80} for Costa Rica with those produced by LAMBdA (Palloni, Pinto, and Beltrán-Sánchez 2016), UNPD (United Nations, Department of Economic and Social Affairs, Population Division 2015), and INEC-CCP (Centro Centroamericano de Población 2017c; Instituto Nacional de Estadística y Censos 2009, 2017a).

In addition to comparing our results with those in LAMBdA, we compare the age structure of mortality resulting from our life tables with those for all countries and time periods in the HMD (University of California and Max Planck Institute for Demographic Research 2016). We evaluate how those comparisons differ when we use adjusted estimates from LAMBdA, which reports the highest mortality, rather than our own unadjusted estimates.

3. Evaluation of data quality

3.1 Age misreporting

3.1.1 Age heaping

Although there was clear evidence of age heaping in the 1950 census (Figure 3), age reporting improved considerably by the 1984 census (Figure 4) and age heaping had virtually disappeared by the most recent census in 2011 (Figure 5). In contrast, there is less age heaping in the official population estimates even in 1950, and by 1984, age heaping is no longer visible in the population estimates (Figure 4), as also confirmed by

the calculation of the classic Whipple's and Myers' indices of age attraction (Shryock, Siegel, and Larmon 1973). As noted in the Data section, the INEC-CCP population estimates are constructed using backward projection, starting with population estimates for 2011 that have been corrected for age misreporting. By relying on the official population estimates rather than using the original census counts, we avoid most of the problems associated with age heaping.

Figure 3: Comparison of official population estimates with census counts, 1950, by sex

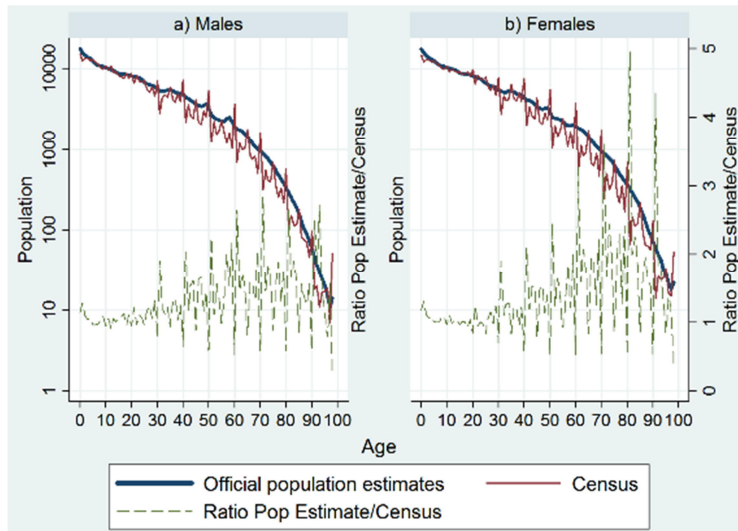


Figure 4: Comparison of official population estimates with census counts, 1984, by sex

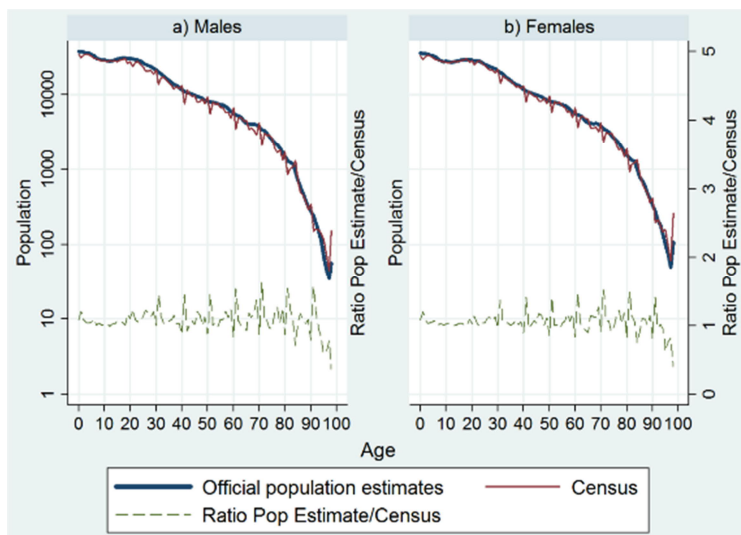
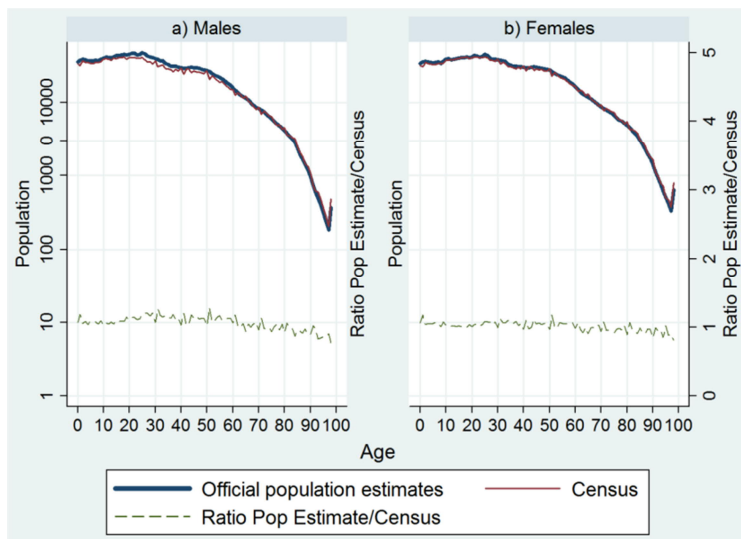


Figure 5: Comparison of official population estimates with census counts, 2011, by sex



Age attraction, as measured by Whipple's and Myers' indices, is slightly more prominent in the death counts than in the population counts. However, they remain well within the range of good-quality data. For the period since 1980, Myers' index (computed for the age range 30–99) hovers around 5 to 8 for the deaths (with an occasional value greater than 9) versus less than 2 (except for 1984, when values are slightly greater) for the population counts; Whipple's index (computed for the age range 32–92) fluctuates between 96 and 110 for the death counts (with one value as high as 113 for females in 1981) and between 99 and 105 for the population counts (results not shown). There is little evidence of age heaping in the mortality rates after the mid-1970s.

3.1.2 Age exaggeration

Age exaggeration is a more insidious problem than age heaping because it is difficult to identify, quantify, and thus correct, but it can severely distort mortality estimates. Preston, Elo, and Stewart (1999) demonstrate that regardless of the nature of age misreporting (overstatement, understatement, or symmetric misreporting), mortality rates at the oldest ages are biased downward (i.e., old-age longevity is overestimated).

External evaluation indicates that age exaggeration tends to bias census counts at older ages upward in Costa Rica. One study suggested that the population aged 80 years and older in the 1984 census was overcounted by as much as 50% (Ministerio de Planificación Nacional y Política Económica, U.N. Centro Latinoamericano de Demografía, and Dirección General de Estadística y Censos 1988; cited in Rosero-Bixby 2008). Analysis of the 2000 census indicated that the population aged 90 years and older was still overestimated by 20% because of age exaggeration (Instituto Nacional de Estadística y Censos and Centro Centroamericano de Población 2002; cited in Rosero-Bixby 2008). Another evaluation of the 2000 census found that age exaggeration inflated the population aged 95 and older by 22%, while the population aged 99 and older was overcounted by 42% (Rosero-Bixby, Brenes, and Collado 2004). However, official annual population estimates have been adjusted by the national statistics office for this problem, another reason for us to use these rather than the raw census counts to compute the denominator for the mortality rates.

Unfortunately, in the absence of an external data source with correct dates of birth or age for comparison, it is difficult to diagnose age exaggeration. Most of the aforementioned evaluations were based on comparisons with the population voter registry. However, we do not have access to that population registry. Instead, we compared the population estimates built by the national statistics office using the cohort component method with the unadjusted census counts. Results indicate inconsistencies,

but it is unclear whether they stem from age exaggeration or from other data problems, such as large net-migration rates, underregistration of deaths, or incomplete enumeration in one or both censuses (see Supplementary archive, S3. Intercensal Cohort Method).

3.2 Relative completeness

The estimates for GGB and GGB-SEG suggest that coverage of death registration was above 90% in most years, with a few exceptions (Table 1). Estimates for the 1950–1963 period appear surprisingly good. From 1963 to 1984, the results suggest lower levels of relative completeness (less than 90% by some estimates). Although relative completeness looks better in 1984–2000, the results indicate some problems even for the most recent period (2000–2011), particularly among women. The sensitivity of the results to the choice of age range for fitting is especially apparent for women in the most recent period: Estimates based on the optimal age range suggest that relative completeness is good (>95%), whereas estimates based on the age range 5+ to 65+ imply poor (88%) relative completeness. We are suspicious of these estimates because death registration is believed to be virtually complete since 2000. One report suggests that death records were already 92% complete in 1970 and that continuing progress has increased this figure to 99% as early as 1990 (Solano 2009). Also, if deaths were underregistered, we would have expected the underregistration to be concentrated among men rather than women because estimates of mortality for older Costa Rican men are lower than anticipated. Starting around ages 65–70 years, the sex ratio (male/female) in the Costa Rica mortality rates is lower than in other populations, even in those with a smaller sex difference in the expectation of life at birth (e.g., Sweden); data not shown.

The GGB and GGB-SEG estimates should be interpreted with caution because it is likely that some important assumptions of the method have been violated, in particular the assumption of a closed population (i.e., no net migration), which is particularly problematic for Costa Rica, a country with fluctuating migration flows. Costa Rica has experienced positive and irregular net migration over the 1990s and 2000s with estimated net migration around 1,000 per year during 1990–1992, increasing sharply to more than 27,000 in 1993, remaining above 25,000 per year through 1998, and then falling to less than 10,000 per year after 2000 (Instituto Nacional de Estadística y Censos 2013). Demographers at *Centro Centroamericano de Población* (CCP) acknowledge that Costa Rica has had a problem of undocumented migration since the 1980s, and thus, the accuracy of migration estimates remains uncertain (Centro Centroamericano de Población 2013; Rosero-Bixby, Brenes Camacho, and Chen-Mok

2002), but it seems safe to assume that net migration has been positive and fluctuating over the past three to four decades.

Table 1: Estimates of relative completeness of death registration, Costa Rica, 1950–2011

	Intercensal period				
	1950–1963	1963–1973	1973–1984	1984–2000	2000–2011
Men					
GGB					
Ages 5+ to 65+	96%	91%	90%	96%	99%
Ages 30+ to 65+	98%	93%	93%	97%	106%
Optimal age range	98%	87%	97%	98%	101%
GGB-SEG					
Ages 5+ to 65+	94%	91%	89%	92%	96%
Ages 30+ to 65+	96%	92%	91%	93%	101%
Optimal age range	96%	88%	95%	94%	98%
Women					
GGB					
Ages 5+ to 65+	95%	91%	91%	93%	88%
Ages 30+ to 65+	95%	92%	94%	95%	97%
Optimal age range	98%	88%	99%	98%	99%
GGB-SEG					
Ages 5+ to 65+	94%	91%	91%	90%	88%
Ages 30+ to 65+	94%	92%	93%	92%	94%
Optimal age range	96%	89%	97%	94%	96%

Note: These estimates are calculated using the DDM R package developed by Tim Riffe based on deaths and the official population estimates (not the original census counts). Estimates of completeness between 95% and 105% are highlighted in green, values of 90–94.9% or 105.1–110% are highlighted in yellow, and values below 90% or above 110% are highlighted in red.

Similar estimates (GGB and GGB-SEG) for existing HMD countries since the 1940s suggest that relative completeness is close to 100% in many, but not all, cases (Lima 2016, personal communication). Even for the period after 2000, some estimates are surprisingly low (e.g., 91% for men in Canada, 92% for US women, and 91% for US men). There are also many cases where estimated completeness is far above 100%, in some instances more than 115% (e.g., Icelandic men in the 2000s; Portuguese women in the 1960s). Again, the results appear to be sensitive to the age range used for

fitting because the degree of violation of the method's basic assumptions (with regard to migration in particular) varies across the age range. For example, when we estimated relative completeness for Swedish women in 2000–2011 (where we expect data to be virtually perfect), the GGB estimates ranged from 85% to 98% and the GGB-SEG estimates ranged from 83% to 97% depending on the ages used for fitting. It is thus difficult to determine whether the GGB and GGB-SEG estimates of completeness are in fact meaningful in Costa Rica given the international migration trends.

The GGB and GGB-SEG estimates for Costa Rican men during 2000–2011 imply that relative completeness is as good as, or even better than, some HMD countries (i.e., Australia, Canada, Luxembourg, the Netherlands, and the United States) in the most recent time period. For Costa Rican women, it depends on the age range used for fitting: For ages 5+ to 65+, estimated completeness for 2000–2011 appears to have been worse than any HMD country, but for the optimal age range (35+ to 75+), estimated completeness appears to have been as good as many HMD countries.

3.3 Comparing Costa Rica mortality estimates across all sources

Prior to 1980, our estimates of the probability of dying in the first year of life (q_0) are lower than those provided by INEC-CCP and LAMBdA (Figure 6). After 1980, our estimates are similar to INEC-CCP, but the estimates for men are still lower than in LAMBdA (Figure 6). Surprisingly, the LAMBdA estimate for women in 2005 is notably lower than both our estimate or the one from INEC-CCP, although the absolute difference between the LAMBdA estimate of q_0 and our own estimate is very small (i.e., less than 1.5 per thousand). The rapid decline in the infant mortality rate in Costa Rica – from a high of around 90 per thousand in 1950 down to less than 8 per thousand in 2015 (Instituto Nacional de Estadística y Censos 2017b) – appears to be real.

With respect to life expectancy at birth (e_0), our estimates prior to 1970 are notably higher (i.e., implying lower mortality) than estimates from INEC-CCP, LAMBdA, and UNPD (Figure 7). The difference between our estimates and those from the UNPD ranges from 3.1 to 7.8 years for the 1950s and 1960s; LAMBdA's estimates are also more than 5 years lower than ours in 1956 and more than 4 years lower in 1968.

Figure 6: Comparison of the probability of dying in the first year of life (q_0 , log scale) with external estimates, 1950–2014, by sex

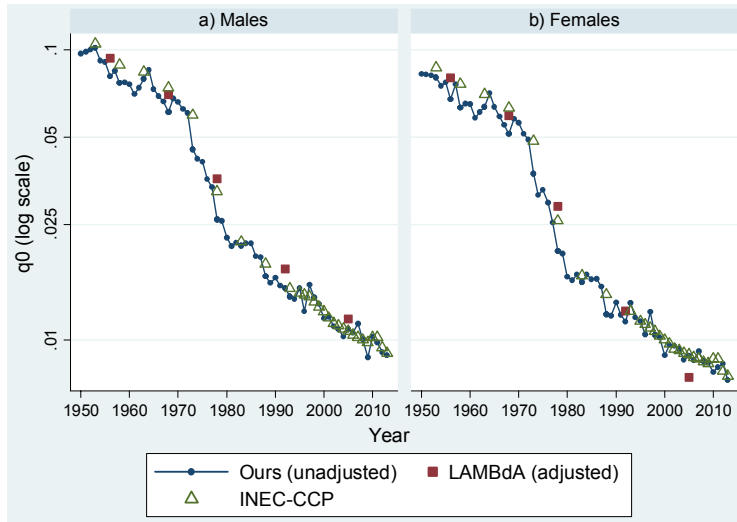
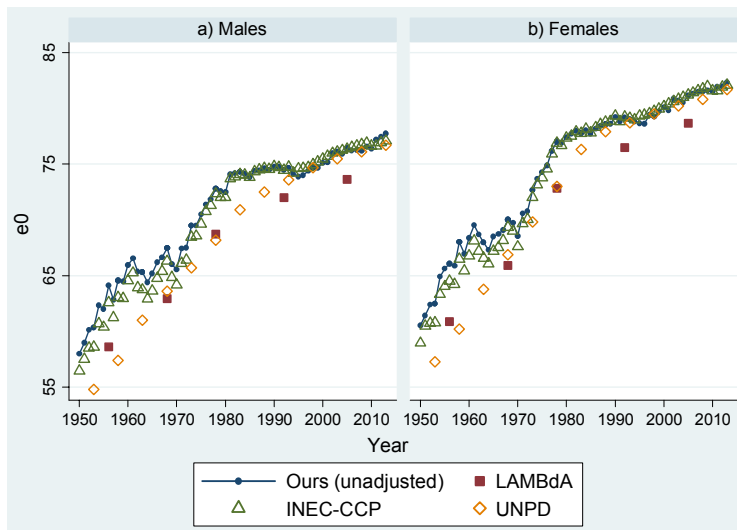


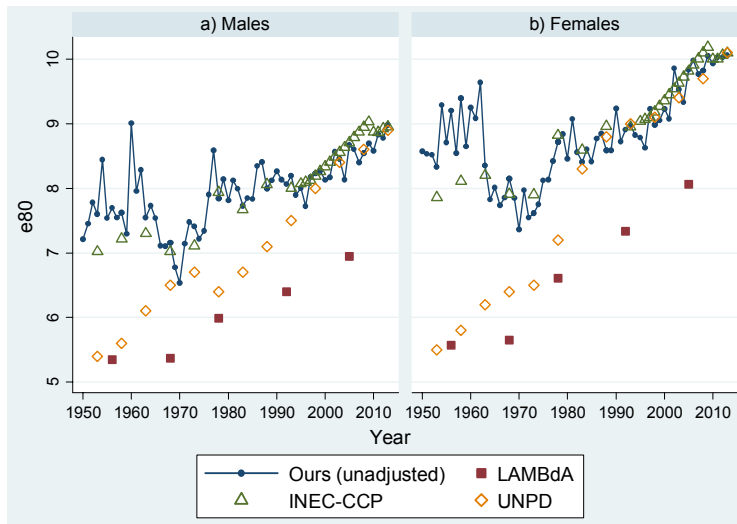
Figure 7: Comparison of life expectancy at birth (e_0) with external estimates, 1950–2014, by sex



Our estimates of e_0 are closer to the INEC-CCP estimates in the 1970s and 1980s, but they are still substantially higher than those from LAMBdA and UNPD by as much as 4.6 years. Since 2000, our estimates are similar to the INEC-CCP and UNPD estimates, but the LAMBdA estimates suggest much lower e_0 even as recently as 2005. The LAMBdA estimates of life expectancy in 2005 (73.7 years for men and 78.7 years for women) are more than 2.5 years lower than ours, which are the same as INEC-CCP's (76.4 for men and 81.2 for women). Our estimated e_0 for women in 2005 would put Costa Rica on par with UK women, whereas the LAMDDa-adjusted estimate implies a level of life expectancy closer to that of Estonian women in that same year. A comparison of HMD estimates of e_0 for Chile (the only Latin American country in the HMD) in 2006 with the corresponding LAMBdA estimates indicates a difference of similar magnitude (with the LAMBdA estimate 2.5 years lower than the HMD for men and 2.7 years lower for women), even though demographic statistics are believed to have been of high quality in Chile (Núñez and Icaza 2006).

As mortality declines, old-age life expectancy becomes increasingly important in determining overall life expectancy. When we compare our estimates of e_{80} with those produced by others, we find that they are somewhat higher than those from INEC-CCP prior to 1980 but much higher than in LAMBdA throughout the period (Figure 8). Compared with LAMBdA, our estimate of e_{80} in 1956 is 64% higher for women (9.2 vs. 5.6 years) and 43% higher for men (7.7 vs. 5.4 years). Even in 2005, our estimates of e_{80} are still more than 20% higher than in LAMBdA. Our estimates are also substantially higher than the UNPD estimates for men prior to 1995 and for women prior to 1980. The patterns in our estimates are consistent with a progressive improvement in age reporting, with a decline in old-age life expectancy during the 1950s and 1960s and stagnation in the 1980s, continuing into the 1990s for men (Figure 8). Trends are more plausible since 2000.

Figure 8: Comparison of life expectancy at age 80 (e_{80}) with external estimates, 1950–2014, by sex

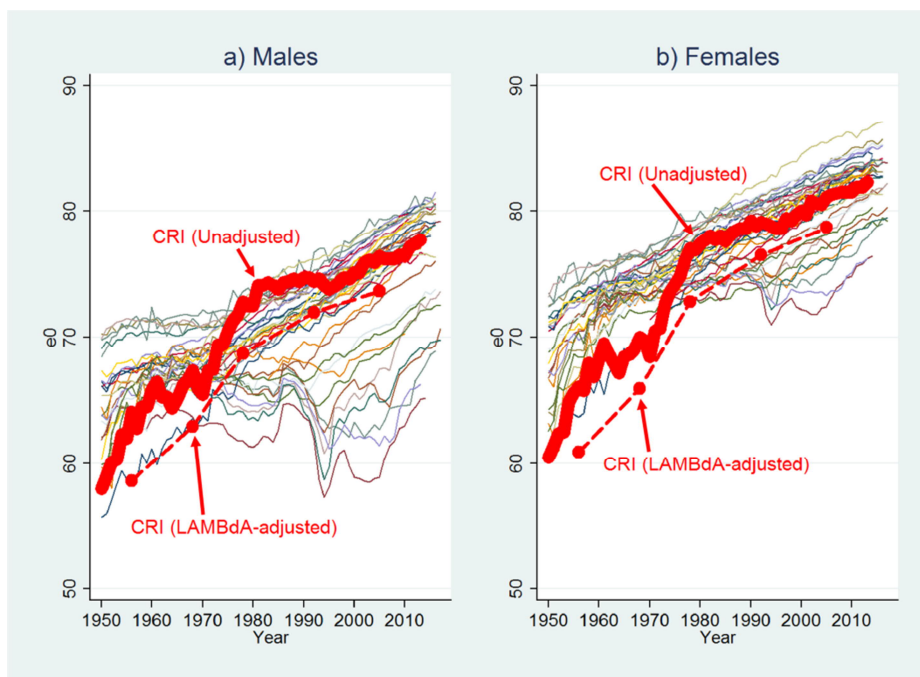


4. Mortality trends compared with other countries

4.1 Life expectancy at birth (e_0)

At the beginning of the data series (1950), life expectancy at birth in Costa Rica fell near to the bottom of the range defined by HMD countries (25 with data for 1950) but increased rapidly, between 1950 and 1980 in particular (Figure 9). By 2013, Costa Rican men (with an unadjusted e_0 of 77.8 years) would rank 25th among the 38 HMD countries (listed from the lowest to the highest level of life expectancy at birth), between Slovenia and Taiwan. For women, Costa Rica (at 82.3 years) would rank 26th, between Denmark and the Czech Republic.

Figure 9: Life expectancy at birth (e_0), Costa Rica (unadjusted and adjusted estimates, shown in red) compared with HMD populations (shown in other colors), 1950–2015, by sex



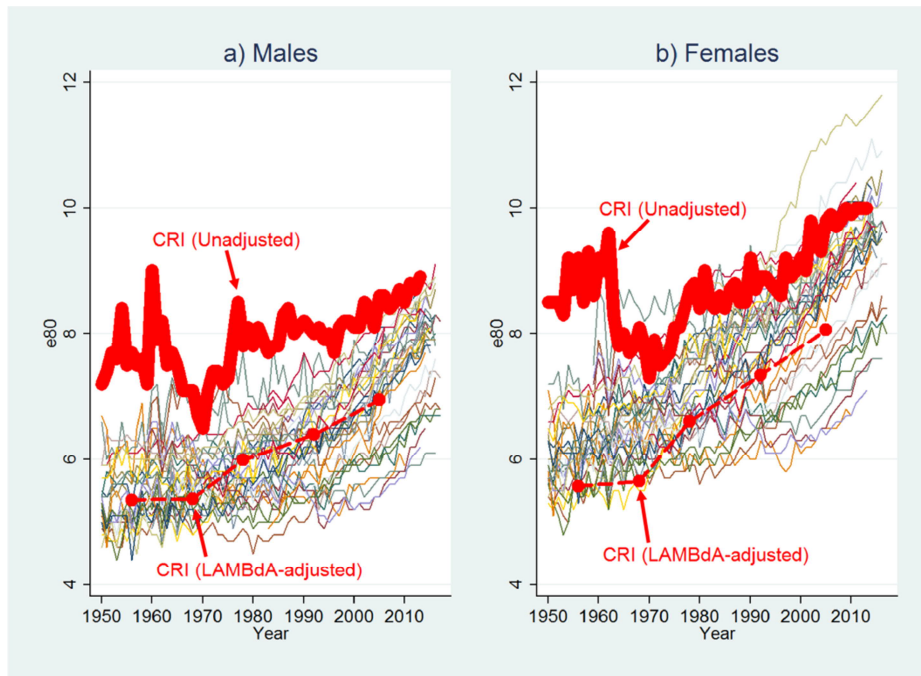
Our current (unadjusted) estimate of e_0 for Costa Rica (79.9 years in 2013, both sexes combined) is higher than the United States (78.9 in 2015) but lower than the United Kingdom (80.9 in 2013) and well below Japan, the leader in life expectancy (83.8 in 2014).

4.2 Life expectancy at age 80 (e_{80})

In contrast with e_0 , e_{80} looks surprisingly high for Costa Rica (Figure 10). In 1950, our unadjusted estimates imply that old-age life expectancy was notably higher in Costa Rica than any HMD country. For women, the remaining length of life at age 80 was estimated at 8.5 years compared with 7.2 for the HMD leader, Iceland. Among men, it was estimated at 7.2 years in Costa Rica compared with 6.8 for Bulgaria and 6.4 for

Iceland. Between 1950 and 1970, e_{80} in Costa Rica appeared to have declined, which likely results from improved data quality as previously mentioned: In the early part of the data series e_{80} was probably overestimated in Costa Rica because of age exaggeration and/or incomplete death registration.

Figure 10: Life expectancy at age 80 (e_{80}), Costa Rica (unadjusted and adjusted estimates, shown in red) compared with HMD populations (shown in other colors), 1950–2015, by sex

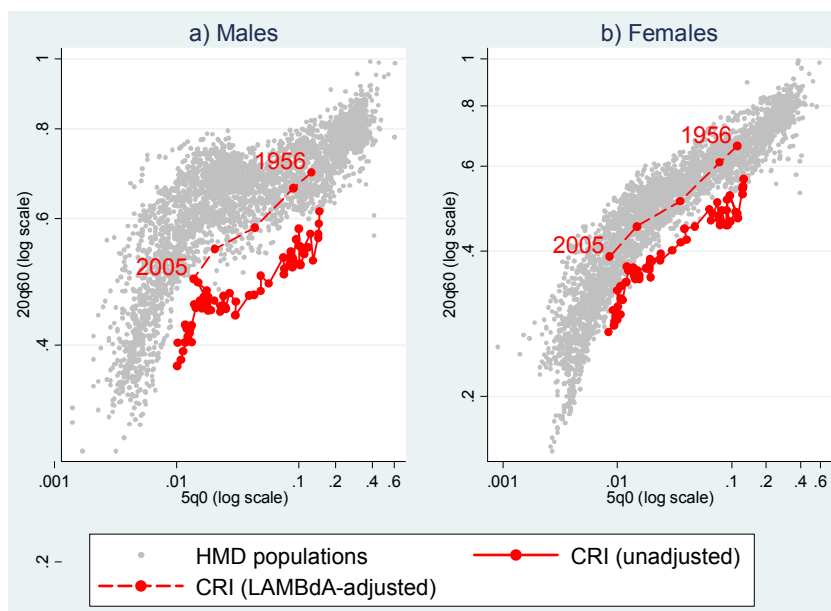


In 2013, at 10.0 years, e_{80} in Costa Rican women would tie with the United States and New Zealand for the 8th position among the 38 HMD countries, and, at 8.9 years, Costa Rican men would tie with Iceland for 2nd place just below the world leader, France (9.0).

4.3 Relationship between child and older-age mortality

In Figure 11, we plot the relationship between child mortality (as captured by the probability of dying in the first five years of life, ${}_5q_0$) and older-age mortality (measured by the probability of dying between ages 60 and 80, ${}_{20}q_{60}$) for Costa Rica alongside all HMD populations for all years available (i.e., back to the mid-1800s for Sweden). Clearly there is a direct relationship between child and early old-age mortality as the HMD estimates are clustered within an elongated point cloud. Over time, the estimates for any given country are likely to proceed from the upper right corner of the graph (high child and high older-age mortality) toward the lower left corner (lower levels of both child and older-age mortality).

Figure 11: Child mortality (${}_5q_0$, log scale) by old-age mortality (${}_{20}q_{60}$, log scale), Costa Rica (unadjusted and adjusted) compared with HMD populations, by sex



For both women and men, Costa Rica is a clear outlier: At any given level of child mortality, mortality between ages 60 and 80 (based on our unadjusted estimates) falls well outside the range of HMD estimates even for the most recent years. This unusual pattern could reflect a problem of data quality. It could stem from overestimation of

mortality below age 5 (${}_5q_0$), although it is rare for child mortality to be overestimated; typically, the problem is underestimation because of incomplete registration of infants who died shortly after birth, but it is possible that the adjustment of census population counts carried out by the national statistics office below age 5 was insufficient, which would produce this pattern. Alternatively, it could result from the underestimation of mortality between the ages of 60 and 80 years (${}_{20}q_{60}$) owing to uncomplete coverage of death registration or to age exaggeration, which has been shown to be widespread in Latin America (Palloni, Pinto-Aguirre, and Beltrán-Sánchez 2015).

4.4 Pattern of mortality at higher ages in comparison with Sweden

Vaino Kannisto, renowned for his analysis of old age mortality, suggested looking at the ratios of mortality indicators at higher ages to assess their validity. Following this strategy, we selected Sweden for comparison as the excellent quality of demographic data in this country has been demonstrated (Statistiska Centralbyrån 1969; Wilmoth and Lundström 1996). We compared the relationship between life expectancy at birth and three sets of life table ratios: the ratio of the number of person-years lived at ages 100 and above (T_{100}) to the number of person-years lived at ages 80 and above (T_{80}); the ratio of the number of person-years lived at ages 85 and above (T_{85}) to the number of person-years lived at ages 70 and above (T_{70}); and the ratio of the probability of dying between the ages of 65 and 80 (${}_{15}q_{65}$) to the expectation of life at age 80 (e_{80}); see Supplementary archive, S4. Figures S1–S3). The first two ratios are much higher in Costa Rica compared to Sweden at the same level of life expectancy at birth, while the third ratio is much lower in Costa Rica than in Sweden. Thus, mortality at the oldest ages is lower than we would expect based on the age pattern of mortality observed in Sweden.

5. Intercountry comparisons with LAMBdA life tables

In Figures 9 and 10, we also show the adjusted estimates for e_0 and e_{80} from LAMBdA alongside our own unadjusted estimates for Costa Rica and HMD countries. The LAMBdA-adjusted estimates suggest that in 1950 e_0 in Costa Rica was as low as or lower than in any HMD country and that e_{80} ranked near the bottom. By 2005, Costa Rica ranked near the middle of the pack in terms of both e_0 and e_{80} .

As for the relationship between child and early old-age mortality (Figure 11), the LAMBdA estimates for Costa Rica are much more consistent with the mortality experience of HMD countries than the unadjusted estimates. Among women, the

LAMBdA estimates fall well within the range defined by the HMD estimates, though for men they are still at the bottom of the range in the most recent years. However, plausibility does not necessarily mean accuracy, and the documentation available for LAMBdA is too general to determine if the methods implemented to produce mortality indicators in this database were selected because they yielded reasonable estimates or if these are indeed closer to the reality than our unadjusted estimates.

6. Conclusion and discussion

Using the HMD methods, which were developed for countries with full demographic coverage and reliable vital registration systems, we find that life expectancy at birth in Costa Rica has risen from 59.3 years in 1950 to 79.9 years in 2013, a level higher than in several high-income countries. Although our estimates indicate that Costa Ricans are long-lived, analysis of mortality trends and patterns as well as comparisons with other estimates suggest that longevity in Costa Rica may be overestimated.

Compared with estimates constructed by others who have adjusted for relative completeness and age misreporting, our life expectancy estimates are substantially higher, especially prior to 1980. Mortality at older ages is even more unusual when compared with other estimates for Costa Rica and with other high-income countries. In particular, Costa Rica exhibits surprisingly low old-age mortality relative to child mortality, falling well outside the range defined by 38 high-income countries in the HMD.

Our analysis suggests that mortality among the oldest Costa Ricans is almost certainly underestimated prior to 1984, probably because of some combination of incomplete census coverage, incomplete death registration, and age exaggeration. For the more recent period, we cannot draw a definitive conclusion regarding the reliability of the estimates because the evidence is circumstantial and because other studies suggest that Costa Ricans might in fact enjoy unusually low mortality at older ages (Payne 2015; Rosero-Bixby 2008, 2018; Rosero-Bixby and Dow 2009). For example, a prior study that carefully selected birth, death, and population data based on accuracy to compute mortality at ages 90 and over using the Extinct Cohort method found old-age mortality that was higher (i.e., life expectancy was lower) than what official estimates would suggest (Rosero-Bixby 2008). Nonetheless, life expectancy at age 90 among men was still about half a year higher in this study than for any other country, while corresponding estimates for women would put Costa Rica on par with two countries at the top of the distribution (i.e., Japan and the United States).

One important source of uncertainty is the size of the immigrant population in Costa Rica, which is the most undercounted subpopulation. Although INEC-CCP has

published estimates of net migration (Instituto Nacional de Estadística y Censos 2013), demographers admit that there is a problem of undocumented migration in Costa Rica since the 1980s, and thus, they do not know whether the net-migration figures are accurate (Brenes 2016, personal communication). Unaccounted migration may jeopardize the accuracy of adjustment methods, resulting in biased estimates. Migration assumptions are crucial in the implementation of evaluation and adjustment methods. In general, methods such as DDM may be useful for detecting gross errors, but it may be risky to rely on them for fine-tuning estimates, particularly in populations where the assumptions underlying the methods are violated. Although measures of relative completeness suggest some inconsistencies, it is difficult to determine if they truly represent data deficiencies or are simply the result of violations in the method's assumptions.

Part of the apparent longevity advantage of Costa Ricans may be an artifact of data deficiencies. The pattern of declining levels of e_{80} during 1950–1970, when e_0 was rapidly increasing, is particularly suspicious. The most likely explanation for this pattern is improvement in age reporting throughout this period, which is supported by prior external evaluation of the census counts (Ministerio de Planificación Nacional y Política Económica, U.N. Centro Latinoamericano de Demografía, and Dirección General de Estadística y Censos 1988; cited in Rosero-Bixby 2008). In any event, variability in the level of mortality estimated by diverse institutions together with unusual mortality patterns suggest that only in a context of improved reliability of the basic national statistics will we be able to determine with certainty the level of life expectancy in Costa Rica.

7. Acknowledgements

This work was supported by awards from the US National Institute on Aging [grant numbers R01-AG011552, R01-AG040245, P30-AG012839] as well as from contributions to the Human Mortality Database project from the Berkeley Center on the Economics and Demography of Aging; the Society of Actuaries in the United States; the United Kingdom Institute and Faculty of Actuaries; the AXA Research Fund in France; Hannover-Re; SCOR; and Reinsurance Group of America. However, any opinions, findings, and conclusions or recommendations expressed in this material are those of the authors alone and do not necessarily represent the official views of the National Institute on Aging and other funders. We are grateful to Luis Rosero-Bixby, Gilbert Brenes, Dmitri Jdanov, William Dow, and Patrick Gerland for their comments on this manuscript. We also thank other HMD staff who assisted with the construction of this data series: Carl Boe, Lisa Yang, Celeste Winant, and Gabriel Borges.

References

- Barbieri, M., Wilmoth, J.R., Shkolnikov, V.M., Glei, D.A., Jasilionis, D., Jdanov, D., Boe, C., Riffe, T., Grigoriev, P., and Winant, C. (2015). Data resource profile: The Human Mortality Database (HMD). *International Journal of Epidemiology* 44(5): 1549–1556. doi:10.1093/ije/dyv105.
- Beltrán-Sánchez, H., Palloni, A., Pinto-Aguirre, G., and Verhulst, A. (2018). The Latin American Mortality Database (LAMBdA): Methodological document, preliminary version [electronic resource]. Madison: University of Wisconsin. https://www.ssc.wisc.edu/cdha/latinmortality/wp-content/uploads/LAMBdA_documentation.pdf.
- Bennett, N.G. and Horiuchi, S. (1981). Estimating the completeness of death registration in a closed population. *Population Index* 47(2): 207–221. doi:10.2307/2736447.
- Bennett, N.G. and Horiuchi, S. (1984). Mortality estimation from registered deaths in less developed countries. *Demography* 21(2): 217–233. doi:10.2307/2061041.
- Borges, G. and Sacco, N. (2016). *Has census coverage in Latin America improved with time?* Paper presented at the International Seminar on Registering and Counting the Population: The production and exploration of census information from early modern times to the end of 20th century, IUSSP and NEPO-UNICAMP, Campinas, Brazil, May 19–21, 2016.
- Brass, W. (1975). *Methods for estimating fertility and mortality from limited and defective data: Based on seminars held 16–24 September 1971 at the Centro Latinoamericano de Demografía (CELADE), San José, Costa Rica*. Chapel Hill: International Program of Laboratories for Population Statistics, Department of Biostatistics, University of North Carolina at Chapel Hill.
- Centro Centroamericano de Población (2013). Evaluación demográfica del X Censo Nacional de Población de Costa Rica 2011 y de otras fuentes de información. San José: Centro Centroamericano de Población, Universidad de Costa Rica.
- Centro Centroamericano de Población (2017a). Biblioteca virtual en población y salud [electronic resource]. San José: Centro Centroamericano de Población, Universidad de Costa Rica. <http://biblioteca.ccp.ucr.ac.cr>.
- Centro Centroamericano de Población (2017b). Sistema de consulta a bases de datos estadísticas [electronic resource]. San José: Centro Centroamericano de Población, Universidad de Costa Rica. <http://censos.ccp.ucr.ac.cr>.

- Centro Centroamericano de Población (2017c). Tabla completa de mortalidad: Costa Rica 1950–55, 1955–60, ...2005–10 [electronic resource]. San José: Centro Centroamericano de Población, Universidad de Costa Rica. <http://ccp.ucr.ac.cr/observa/CRindicadores/TVcompletas.html>.
- Elo, I.T. and Preston, S.H. (1994). Estimating African-American mortality from inaccurate data. *Demography* 31(3): 427–458. doi:10.2307/2061751.
- Hill, K. (1987). Estimating census and death registration completeness. *Asian Pacific Census Forum* 1(3): 8–24.
- Hill, K., You, D., and Choi, Y. (2009). Death distribution methods for estimating adult mortality: Sensitivity analysis with simulated data error. *Demographic Research* 21(9): 235–254. doi:10.4054/DemRes.2009.21.9.
- Institute for Health Metrics and Evaluation (2016). Global Burden of Disease Study 2015 (GBD 2015) results [electronic resource]. Seattle: Institute for Health Metrics and Evaluation. <http://ghdx.healthdata.org/gbd-results-tool>.
- Instituto Nacional de Estadística y Censos (2009). Esperanza de vida al nacer, a los 20 y a los 65 años de edad, Costa Rica 1930–2008 [electronic resource]. San José: INEC. <http://ccp.ucr.ac.cr/observa/CRindicadores/evida.html> (accessed 13 November 2009).
- Instituto Nacional de Estadística y Censos (2013). *Estimaciones y proyecciones de población por sexo y edad 1950–2050*. San José: INEC, Centro Centroamericano de Población.
- Instituto Nacional de Estadística y Censos (2017a). Tablas completas de mortalidad 1995, 1996, ...2015 [electronic resource]. San José: INEC. <http://www.inec.go.cr/sites/default/files/documentos/poblacion/mortalidad/estadisticas/resultados/reploblacvYYYY-01.xls> (where YYYY=Year).
- Instituto Nacional de Estadística y Censos (2017b). Cuadro 1: Principales indicadores demográficos, 1950–2015, Tasa global de fecundidad [electronic resource]. San José: INEC. <http://www.inec.go.cr/sites/default/files/documetos-biblioteca-virtual/seploblacv1950-2015-01.xls>.
- Instituto Nacional de Estadística y Censos and Centro Centroamericano de Población (2002). *Costa Rica: Estimaciones y proyecciones de población 1970–2050 actualizados al año 2000 y evaluación del censo del 2000 y otras fuentes de información*. San José: INEC.

- IUSSP-UNFPA (2017a). The generalized growth balance method: Tools for demographic estimation [electronic resource]. Paris: IUSSP. <http://demographicestimation.iussp.org/content/generalized-growth-balance-method>.
- IUSSP-UNFPA (2017b). Synthetic extinct generations methods: Tools for demographic estimation [electronic resource]. Paris: IUSSP. <http://demographicestimation.iussp.org/content/synthetic-extinct-generations-methods>.
- Latin America and the Caribbean Demographic Observatory (2007). Mortality: Methodology of mortality estimates and projections by age and sex. Santiago: CEPAL/ECLAC, United Nations.
- Li, N. and Gerland, P. (2016). *Evaluating the completeness of death registration for developing countries at old age*. Paper presented at the United Nations Expert Group Meeting on ‘Methodology and lessons learned to evaluate the completeness and quality of vital statistics data from civil registration,’ New York, USA, November 3–4, 2016.
- Lima, E., Queiroz, B., and Riffe, T.L. (2016). R implementations of three growth balance methods for estimating adult mortality coverage [electronic resource]. San Francisco: GitHub. <https://github.com/timriffe/AdultCoverage>.
- Ministerio de Planificación Nacional y Política Económica, UN Centro Latinoamericano de Demografía, and Dirección General de Estadística y Censos (1988). *Costa Rica: Estimaciones y proyecciones de población 1950–2025*. San José: Imprenta Nacional.
- Núñez, M.L. and Icaza, M.G. (2006). Quality of mortality statistics in Chile, 1997–2003. *Revista Médica Chile* 134(9): 1191–1196.
- Palloni, A., Beltrán-Sánchez, H., and Pinto Aguirre, G. (2017). Incertidumbre de los estimadores de mortalidad y pruebas de hipótesis: El caso de América Latina y el Caribe, 1850–2010. *Notas de Población* 44(104): 13–32. [doi:10.18356/e68ff37c-es](https://doi.org/10.18356/e68ff37c-es).
- Palloni, A., Pinto, G., and Beltrán-Sánchez, H. (2015). Chapter 2: Estimation of life tables 1850–2010: Adjustments for relative completeness and age misreporting. In: *Two centuries of mortality decline in Latin America: From hunger to longevity*. Madison: University of Wisconsin: 3–75.
- Palloni, A., Pinto, G., and Beltrán-Sánchez, H. (2016). Life tables by year, sex, and 5-year age groups, Latin American Mortality Database (LAMBdA) [electronic resource]. Madison: University of Wisconsin. http://www.ssc.wisc.edu/cdha/latinmortality/?page_id=28.

- Payne, C.F. (2015). Aging in the Americas: Disability-free life expectancy among adults aged 65 and older in the United States, Costa Rica, Mexico, and Puerto Rico. *The Journals of Gerontology Series B: Psychological Sciences and Social Science* 73(2): 337–348. doi:10.1093/geronb/gbv076.
- Preston, S.H., Elo, I.T., and Stewart, Q. (1999). Effects of age misreporting on mortality estimates at older ages. *Population Studies* 53(2): 165–177. doi:10.1080/00324720308075.
- Rosero-Bixby, L. (2008). The exceptionally high life expectancy of Costa Rican nonagenarians. *Demography* 45(3): 673–691. doi:10.1353/dem.0.0011.
- Rosero-Bixby, L. (2018). High life expectancy and reversed socioeconomic gradients of elderly people in Mexico and Costa Rica. *Demographic Research* 38(3): 95–108. doi:10.4054/DemRes.2018.38.3.
- Rosero-Bixby, L., Brenes Camacho, G., and Chen-Mok, M. (2002). Fecundidad diferencial e inmigrantes Nicaragüenses en Costa Rica. *Notas de población* 74: 27–51.
- Rosero-Bixby, L., Brenes, G., and Collado, A. (2004). Tablas de vida para cálculo actuarial de rentas vitalicias y retiro programado: Costa Rica circa 2000. *Población y Salud en Mesoamérica* 1(2): 173–205.
- Rosero-Bixby, L. and Dow, W.H. (2009). Surprising SES gradients in mortality, health, and biomarkers in a Latin American population of adults. *Journals of Gerontology Series B: Psychological Sciences and Social Sciences* 64(1): 105–117. doi:10.1093/geronb/gbn004.
- Shryock, H.S., Siegel, J.S., and Larmon, E.A. (1973). *The methods and materials of demography*. Suitland: US Bureau of the Census.
- Solano, E. (2009). *Evaluación censal con métodos indirectos: Experiencia de Costa Rica*. Paper presented at Conferencia Estadística de las Américas – CEA CEPAL, Santiago, Chile, June 3–5, 2009.
- Statistiska Centralbyrån (1969). Brief historical survey of the organization of the Swedish population statistics. In: *Historisk statistisk för Sverige del 1: Befolkning, andra upplagan 1720–1967*. Stockholm: Statistiska Centralbyrån: 10–11.
- Thatcher, R., Kannisto, V., and Andreev, K. (2002). The survivor ratio method for estimating numbers at high ages. *Demographic Research* 6(1): 1–18. doi:10.4054/DemRes.2002.6.1.

- United Nations Statistics Division (2017). Coverage of civil registration system, births and deaths [electronic resource]. New York: United Nations. <https://unstats.un.org/unsd/demographic-social/crvs>.
- United Nations, Department of Economic and Social Affairs, Population Division (2015). World population prospects: The 2015 revision, DVD edition [electronic resource]. New York: United Nations. <https://esa.un.org/unpd/wpp/Download/Standard/Mortality>.
- United Nations, Department of Economic and Social Affairs, Population Division (2017). World population prospects 2017 [electronic resource]. New York: United Nations. <https://esa.un.org/unpd/wpp/Download/Standard/Mortality>.
- University of California, Berkeley and Max Planck Institute for Demographic Research (2016). Human mortality database [electronic resource]. Berkeley: University of California, Berkeley. <https://www.mortality.org>.
- Wang, H., Naghavi, M., Allen, C., Barber, R.M., Carter, A., Casey, D.C., Charlson, F.J., Chen, A.Z., Coates, M.M., Coggeshall, M., and Dandona, L. (2016). Global, regional, and national life expectancy, all-cause mortality, and cause-specific mortality for 249 causes of death, 1980–2015: A systematic analysis for the Global Burden of Disease Study 2015. *The Lancet* 388(10053): 1459–1544. doi:10.1016/S0140-6736(16)31012-1.
- Wilmoth, J.R., Andreev, K., Jdanov, D., Glei, D.A., Boe, C., Bubenheim, M., Philipov, D., Shkolnikov, S., and Vachon, P. (2007). Methods protocol for the human mortality database, version 5 [electronic resource]. Berkeley: University of California, Berkeley. <https://v5.mortality.org/Public/Docs/MethodsProtocol.pdf>.
- Wilmoth, J.R., Andreev, K., Jdanov, D., Glei, D.A., Riffe, T., Boe, C., Bubenheim, M., Philipov, D., Shkolnikov, S., Vachon, P., Winant, C., and Barbieri, M. (2017). Methods protocol for the human mortality database, version 6 [electronic resource]. Berkeley: University of California, Berkeley. <https://www.mortality.org/Public/Docs/MethodsProtocol.pdf>.
- Wilmoth, J.R. and Lundström, H. (1996). Extreme longevity in five countries: Presentation of trends with special attention to issues of data quality. *European Journal of Population* 12(1): 63–93. doi:10.1007/BF01797166.
- World Health Organization (2014). Life expectancy at birth, WHO Data; downloaded from UNdata [electronic resource]. Geneva: World Health Organization. http://data.un.org/Data.aspx?d=WHO&f=MEASURE_CODE%3aWHOSIS_000001.