

ONLINE APPENDIX

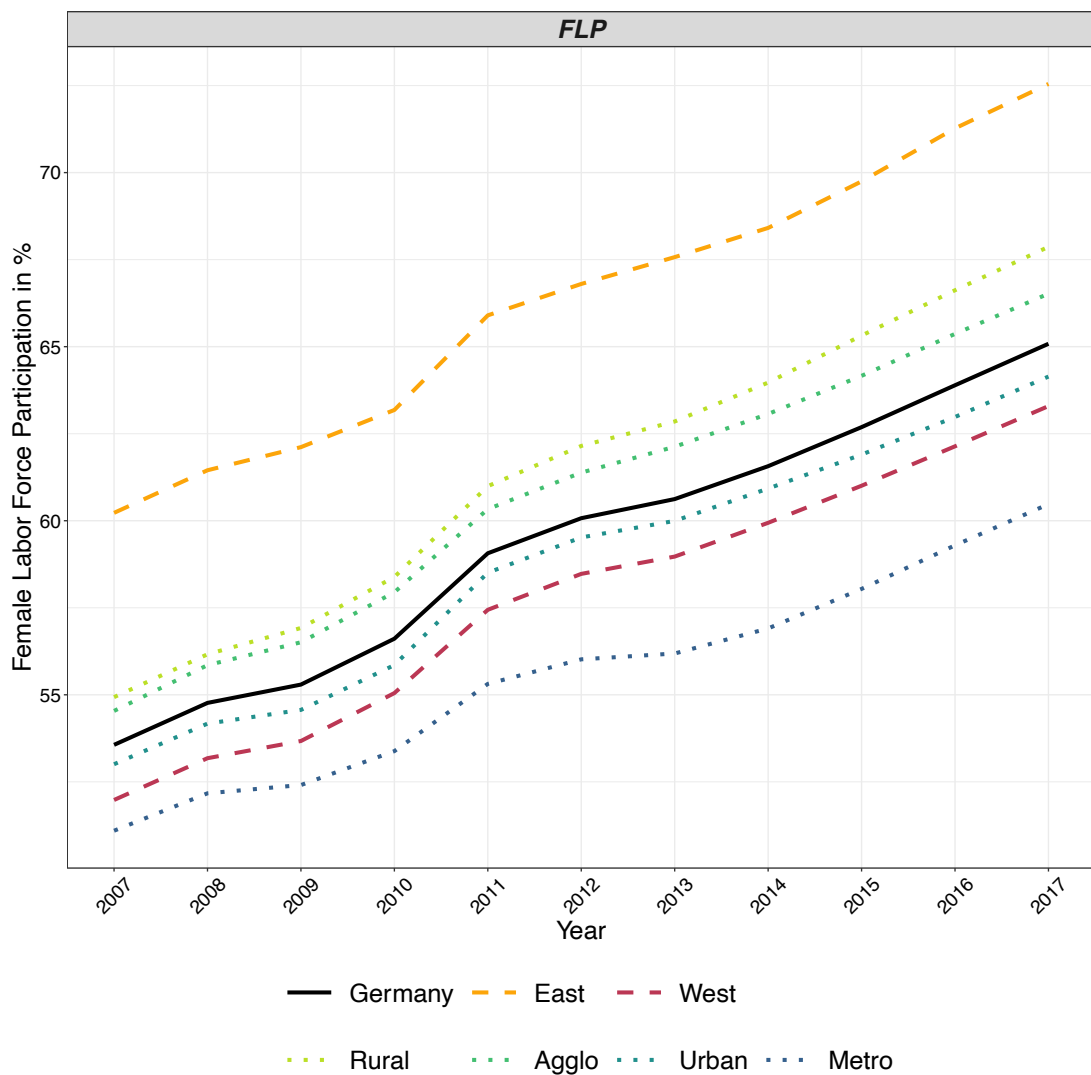
Where Does Public Childcare Boost Female Labor Force Participation?

Exploring Geographical Heterogeneity Across Germany 2007-2017

Franz Neuberger, Tobias Rüttenauer, Martin Bujard

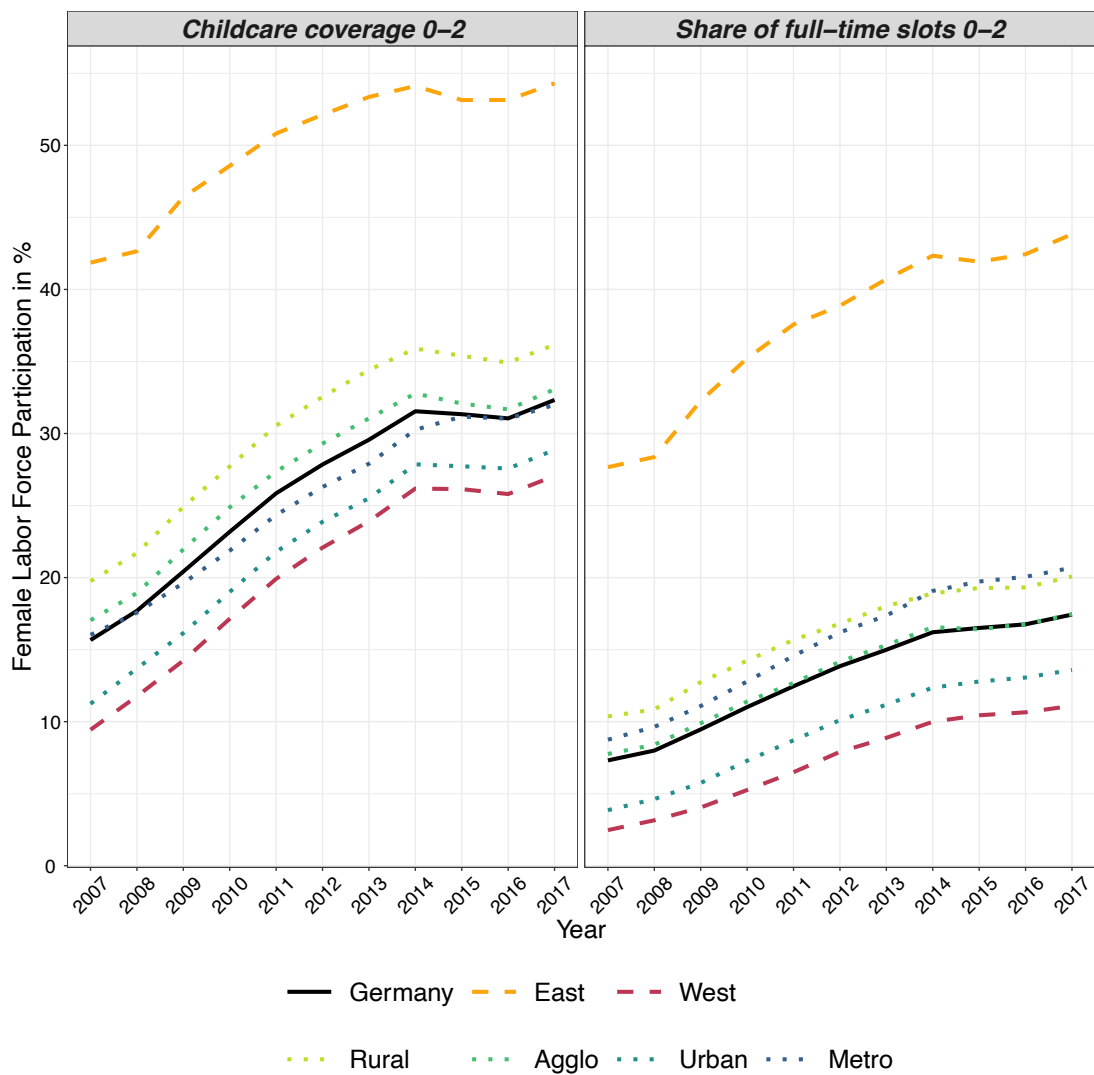
16th March 2022

Figure A1: Female Labor Force Participation (FLP) in West and East Germany per Area Type



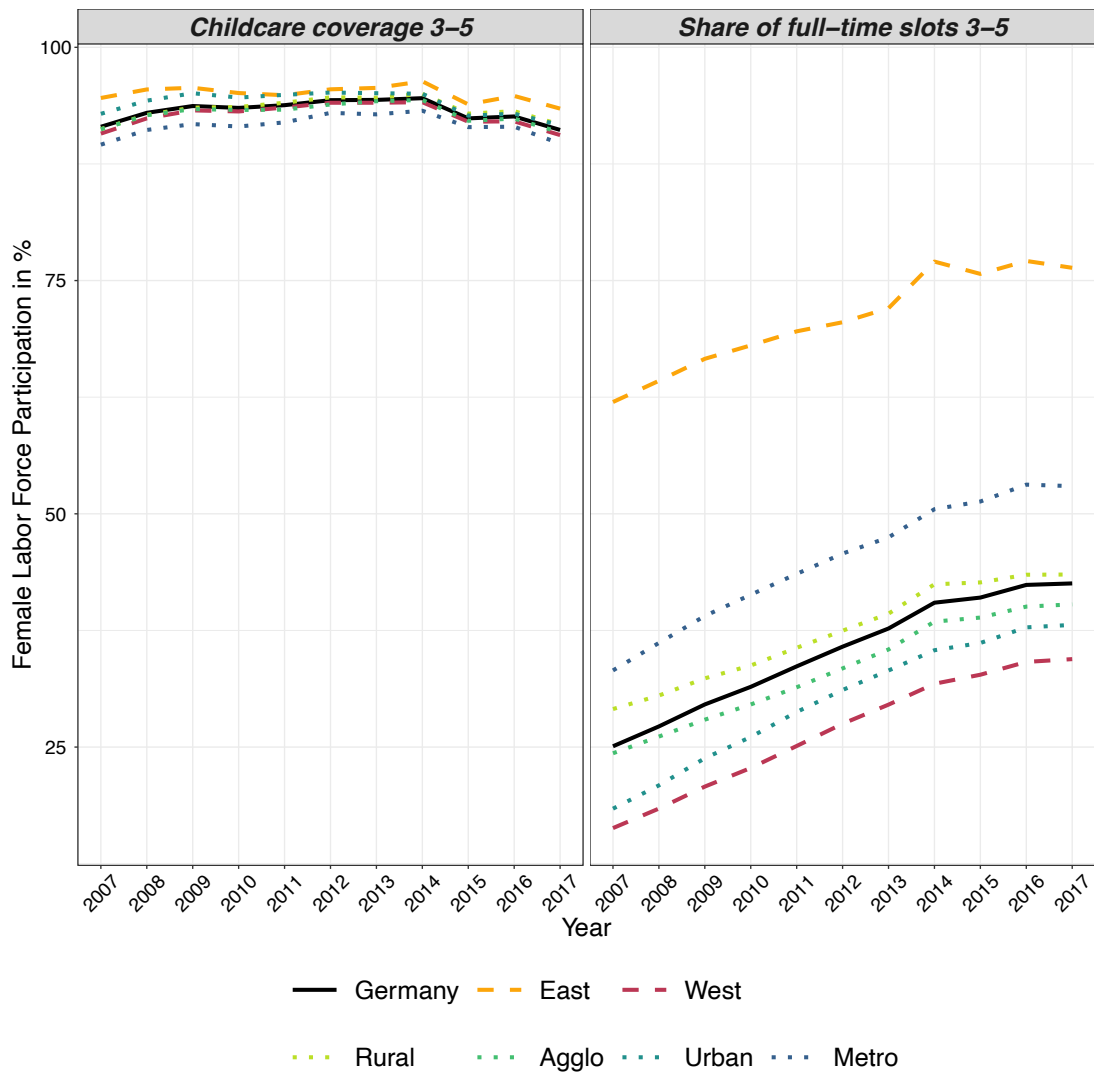
Source: German Statistical Office: Data on subsidized childcare; Federal Office for Building and Regional Planning (Indikatoren und Karten zur Raumentwicklung, INKAR): Indicators and Maps on the Spatial Development; own calculations. See Tables A4 to A10.

Figure A2: Share of Children Aged 0 to 2 in Childcare Enrollment in West and East Germany per Area Type



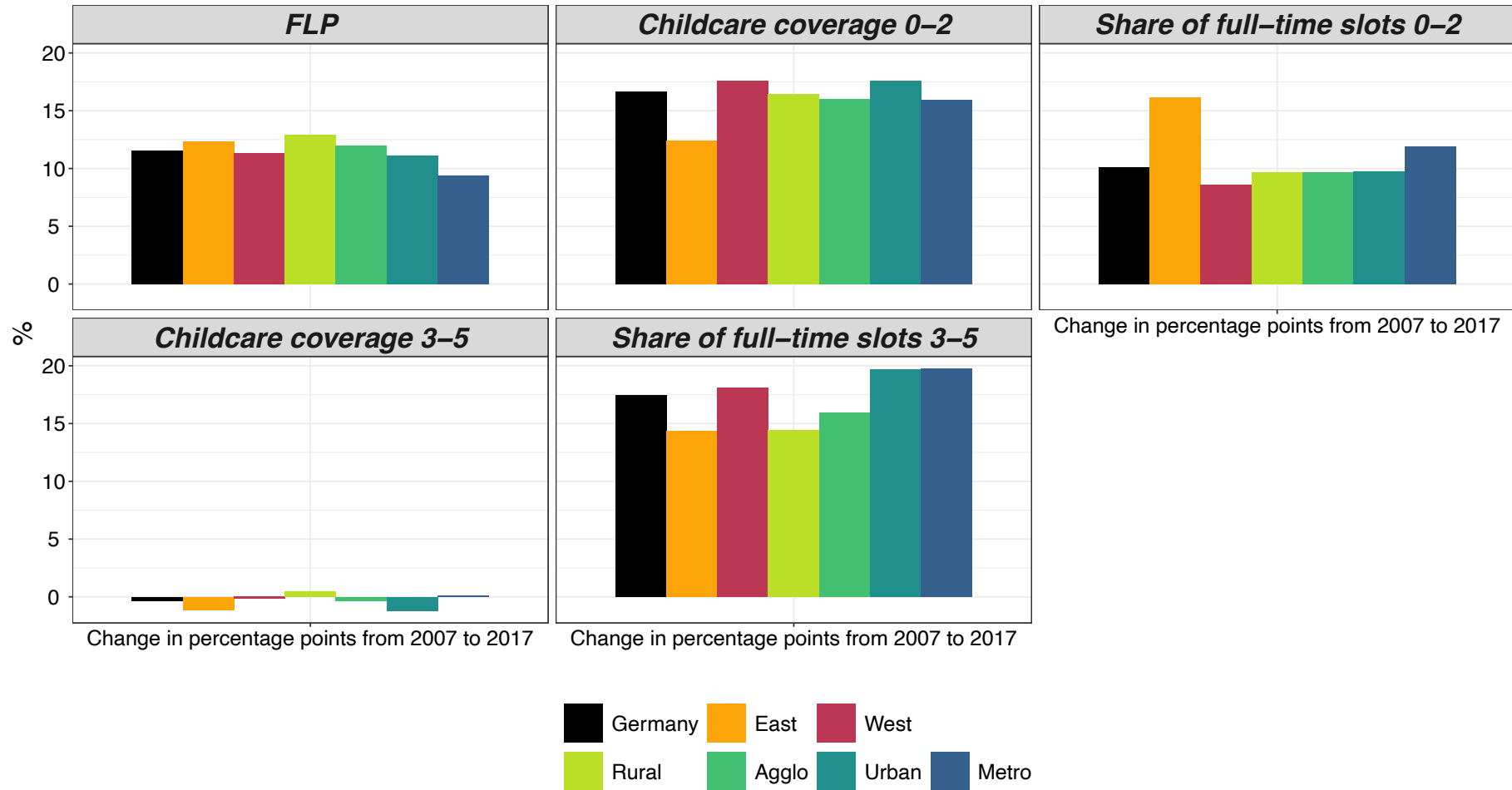
Source: German Statistical Office: Data on subsidized childcare; Federal Office for Building and Regional Planning (Indikatoren und Karten zur Raumentwicklung, INKAR): Indicators and Maps on the Spatial Development; own calculations. See Tables A4 to A10.

Figure A3: Share of Children Aged 0 to 2 in Full-time Enrollment in West and East Germany per Area Type



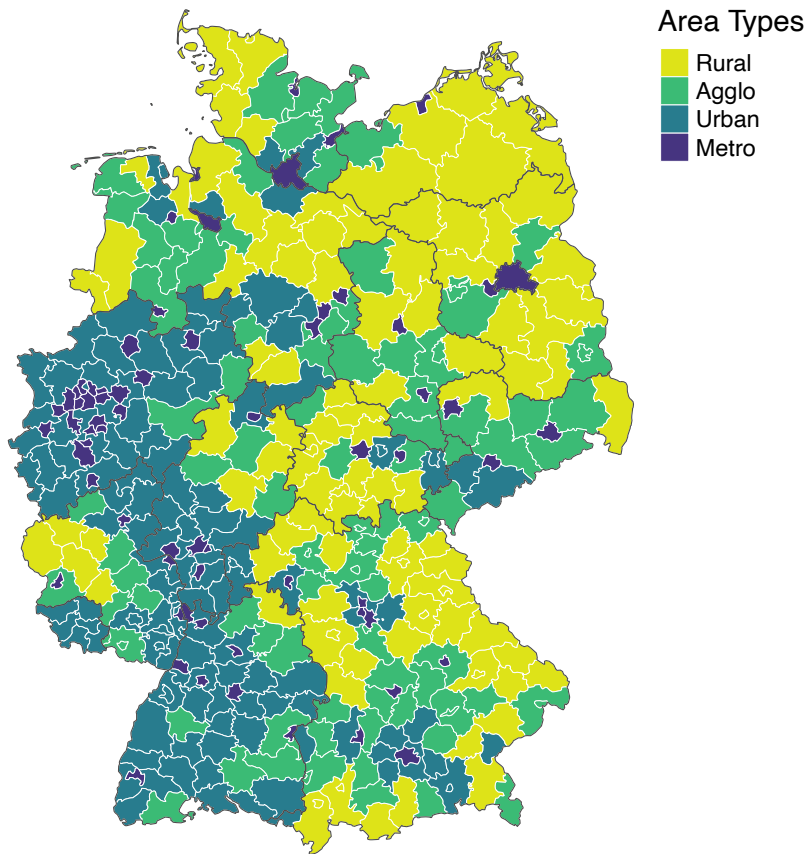
Source: German Statistical Office: Data on subsidized childcare; Federal Office for Building and Regional Planning (Indikatoren und Karten zur Raumentwicklung, INKAR): Indicators and Maps on the Spatial Development; own calculations. See Tables A4 to A10.

Figure A4: Percentage Point Changes in FLP and Childcare (%) per Area Type



Source: German Statistical Office: Data on subsidized childcare; Federal Office for Building and Regional Planning (Indikatoren und Karten zur Raumentwicklung, INKAR): Indicators and Maps on the Spatial Development; own calculations. See Tables A4 to A10.

Figure A5: District Types for Germany



Source: German Statistical Office: Data on subsidized childcare; Federal Office for Building and Regional Planning (Indikatoren und Karten zur Raumentwicklung, INKAR): Indicators and Maps on the Spatial Development; Rural: Sparsely populated rural county; Agglo: Rural county with agglomeration approaches; Urban: Urban District; Metro: Independent Metropolis; <https://www.bbr.bund.de/BBSR/DE/Raumebeobachtung/Raumabgrenzungen/deutschland/kreise/Kreistypen4/downloadangebote.html?nn=443202>, accessed 20.2.2020.

Table A1: FLP and Childcare Variables in 2007 and 2017

	Area	Variable	2007 (%)	2017 (%)	Change (abs.)	Change rate
1	Germany	FLP	53.56	65.08	11.52	1.22
2	East	FLP	60.23	72.55	12.32	1.20
3	West	FLP	51.98	63.29	11.31	1.22
4	Rural	FLP	54.93	67.87	12.93	1.24
5	Agglo	FLP	54.54	66.52	11.98	1.22
6	Urban	FLP	53.01	64.14	11.14	1.21
7	Metro	FLP	51.10	60.48	9.38	1.18
8	Germany	Childc. cov. 0-2	15.66	32.33	16.67	2.06
9	East	Childc. cov. 0-2	41.86	54.31	12.45	1.30
10	West	Childc. cov. 0-2	9.44	27.06	17.62	2.87
11	Rural	Childc. cov. 0-2	19.75	36.17	16.42	1.83
12	Agglo	Childc. cov. 0-2	17.04	33.07	16.03	1.94
13	Urban	Childc. cov. 0-2	11.24	28.86	17.62	2.57
14	Metro	Childc. cov. 0-2	16.03	31.99	15.97	2.00
15	Germany	Share ft. slots 0-2	7.31	17.43	10.12	2.38
16	East	Share ft. slots 0-2	27.67	43.83	16.17	1.58
17	West	Share ft. slots 0-2	2.48	11.10	8.62	4.48
18	Rural	Share ft. slots 0-2	10.37	20.08	9.71	1.94
19	Agglo	Share ft. slots 0-2	7.76	17.46	9.71	2.25
20	Urban	Share ft. slots 0-2	3.86	13.59	9.73	3.52
21	Metro	Share ft. slots 0-2	8.75	20.69	11.94	2.36
22	Germany	Childc. cov. 3-5	91.48	91.14	-0.34	1.00
23	East	Childc. cov. 3-5	94.57	93.43	-1.14	0.99
24	West	Childc. cov. 3-5	90.75	90.59	-0.16	1.00
25	Rural	Childc. cov. 3-5	91.23	91.71	0.48	1.01
26	Agglo	Childc. cov. 3-5	91.21	90.89	-0.33	1.00
27	Urban	Childc. cov. 3-5	92.87	91.66	-1.21	0.99
28	Metro	Childc. cov. 3-5	89.57	89.68	0.11	1.00
29	Germany	Share ft. slots 3-5	25.09	42.54	17.46	1.70
30	East	Share ft. slots 3-5	61.98	76.37	14.38	1.23
31	West	Share ft. slots 3-5	16.32	34.43	18.11	2.11
32	Rural	Share ft. slots 3-5	29.08	43.49	14.42	1.50
33	Agglo	Share ft. slots 3-5	24.34	40.29	15.96	1.66
34	Urban	Share ft. slots 3-5	18.40	38.10	19.70	2.07
35	Metro	Share ft. slots 3-5	33.21	52.97	19.75	1.59

Source: German Federal Employment Agency: Data on female labor force participation; German Statistical Office: Data on subsidized childcare; Federal Office for Building and Regional Planning (Indikatoren und Karten zur Raumentwicklung, INKAR): Indicators and Maps on the Spatial Development; German Federal Employment Agency: Data on female labour force participation, own calculations. See Tables A4 to A10.

Table A2: Fixed Effect Individual Slope (FEIS) Models

	Germany	East	West	Rural	Agglo	Urban	Metro
Childcare coverage 0-2	0.03* [0.01;0.05]	0.02 [-0.02;0.07]	0.03* [0.00;0.05]	0.02 [-0.02;0.06]	0.01 [-0.02;0.05]	0.05* [0.02;0.08]	0.03 [-0.04;0.10]
Share of full-time slots 0-2	-0.02 [-0.05;0.01]	-0.02 [-0.07;0.04]	0.01 [-0.03;0.05]	-0.02 [-0.06;0.03]	0.03 [-0.03;0.09]	0.00 [-0.05;0.06]	-0.02 [-0.11;0.06]
Childcare coverage 3-5	0.04* [0.02;0.06]	0.01 [-0.04;0.07]	0.05* [0.03;0.06]	0.05* [0.02;0.09]	0.03 [-0.01;0.06]	0.03* [0.00;0.05]	0.09* [0.04;0.14]
Share of full-time slots 3-5	0.01 [-0.00;0.02]	0.00 [-0.03;0.03]	0.02 [-0.00;0.03]	0.01 [-0.01;0.03]	-0.01 [-0.04;0.02]	0.00 [-0.02;0.03]	0.02 [-0.02;0.05]
Nr. of children 0-2	0.13 [-0.43;0.70]	0.26 [-1.24;1.77]	0.16 [-0.45;0.77]	0.15 [-1.01;1.31]	-0.57 [-1.66;0.53]	0.12 [-0.70;0.93]	1.33* [0.12;2.54]
Nr. of children 3-6	2.04* [1.47;2.61]	2.17* [0.95;3.39]	1.94* [1.30;2.58]	1.86* [0.76;2.97]	1.54* [0.52;2.55]	1.12* [0.26;1.98]	3.75* [1.98;5.52]
Nr. of children 6-18	0.86* [0.56;1.17]	0.23 [-0.47;0.93]	1.37* [0.92;1.81]	0.53* [0.03;1.02]	0.57 [-0.01;1.15]	1.14* [0.46;1.82]	0.95* [0.13;1.77]
% of females 18+	0.01 [-0.06;0.09]	-0.03 [-0.20;0.14]	0.01 [-0.06;0.08]	0.01 [-0.12;0.15]	0.00 [-0.14;0.15]	0.03 [-0.08;0.15]	0.04 [-0.12;0.19]
% of females 25+	0.02 [-0.04;0.08]	0.09 [-0.06;0.24]	0.00 [-0.06;0.07]	0.02 [-0.10;0.13]	0.00 [-0.09;0.10]	0.06 [-0.05;0.16]	-0.16 [-0.37;0.05]
% of females 65+	1.26* [1.04;1.49]	1.73* [0.95;2.50]	1.09* [0.86;1.32]	1.15* [0.69;1.61]	1.01* [0.55;1.46]	1.36* [1.01;1.72]	0.97* [0.53;1.41]
Fertility rate	0.10 [-0.01;0.20]	0.02 [-0.35;0.39]	0.09 [-0.02;0.19]	0.15 [-0.08;0.37]	0.13 [-0.08;0.34]	0.07 [-0.09;0.23]	-0.24 [-0.48;0.00]
% university entrance qual.	0.01* [0.01;0.02]	-0.00 [-0.02;0.01]	0.01* [0.01;0.02]	0.02* [0.01;0.03]	0.02* [0.01;0.03]	0.01* [0.00;0.02]	0.01 [-0.01;0.02]
% without formal qual.	0.01 [-0.01;0.03]	0.02 [-0.03;0.08]	-0.00 [-0.03;0.02]	0.03 [-0.01;0.07]	0.02 [-0.03;0.08]	-0.01 [-0.05;0.02]	0.01 [-0.05;0.06]
% students	0.00 [-0.00;0.01]	-0.00 [-0.01;0.01]	0.00 [-0.00;0.01]	0.04 [-0.01;0.08]	-0.02* [-0.03;-0.00]	-0.00 [-0.02;0.01]	0.01* [0.00;0.01]
% female students	-0.00 [-0.00;0.00]	-0.00 [-0.01;0.00]	-0.00 [-0.01;0.00]	-0.00 [-0.01;0.01]	0.00 [-0.01;0.01]	-0.00 [-0.01;0.01]	-0.02* [-0.03;-0.01]
Apprentice positions	0.00 [-0.00;0.00]	0.03* [0.01;0.05]	0.00 [-0.00;0.00]	-0.00 [-0.00;0.00]	0.01 [-0.00;0.01]	-0.00 [-0.00;0.00]	0.04* [0.00;0.07]
GDP	0.09* [0.04;0.13]	0.17* [0.05;0.29]	0.07* [0.03;0.12]	0.23* [0.15;0.31]	0.11* [0.04;0.17]	0.16* [0.12;0.20]	0.04* [0.02;0.06]
Share of female employees (%)	0.01 [-0.01;0.04]	0.07* [0.02;0.13]	-0.01 [-0.04;0.02]	0.04 [-0.01;0.08]	0.01 [-0.04;0.06]	-0.01 [-0.04;0.03]	0.01 [-0.07;0.09]
Unemployed females per 1000	-0.06* [-0.07;-0.05]	-0.03* [-0.05;-0.01]	-0.07* [-0.08;-0.06]	-0.04* [-0.05;-0.02]	-0.04* [-0.06;-0.01]	-0.07* [-0.09;-0.06]	-0.07* [-0.09;-0.05]
Recession 2008/2009	-0.27* [-0.35;-0.20]	0.11 [-0.10;0.32]	-0.39* [-0.46;-0.32]	-0.29* [-0.43;-0.15]	-0.19* [-0.34;-0.03]	-0.31* [-0.43;-0.20]	-0.21* [-0.36;-0.06]
Migration Crisis 2015	0.00 [-0.06;0.06]	-0.22* [-0.42;-0.02]	0.04 [-0.02;0.10]	0.02 [-0.11;0.15]	-0.06 [-0.17;0.04]	0.06 [-0.06;0.18]	-0.06 [-0.22;0.10]
R ²	0.34	0.26	0.39	0.33	0.27	0.52	0.39
Adj. R ²	0.33	0.24	0.39	0.32	0.26	0.51	0.37
Num. obs.	4407	847	3560	1121	1111	1438	737
Num. groups: id	401	77	324	102	101	131	67
RMSE	0.55	0.63	0.52	0.57	0.56	0.47	0.57

* Null hypothesis value outside the confidence interval; Cluster robust standard errors. Slopes: year and year year², FEIS Model includes dummy variables for financial crisis (2008/2009) and migration crisis in (2015), own calculations.

Table A3: Fixed Effect (FE) Models

	Germany	East	West	Rural	Agglo	Urban	Metro
Childcare coverage 0-2	0.04*	0.10*	0.07*	0.01	0.04	0.10*	-0.03
	[0.02;0.06]	[0.06;0.15]	[0.04;0.09]	[-0.06;0.09]	[-0.02;0.11]	[0.04;0.15]	[-0.14;0.07]
Share of full-time slots 0-2	-0.00	0.07*	-0.06*	0.04	0.01	-0.01	0.05
	[-0.03;0.02]	[0.03;0.12]	[-0.09;-0.02]	[-0.04;0.12]	[-0.10;0.13]	[-0.11;0.08]	[-0.08;0.19]
Childcare coverage 3-5	0.07*	0.06*	0.07*	0.08*	0.05*	0.07*	0.18*
	[0.05;0.09]	[0.01;0.10]	[0.05;0.09]	[0.03;0.13]	[0.00;0.11]	[0.02;0.12]	[0.11;0.25]
Share of full-time slots 3-5	-0.04*	-0.01	-0.02*	-0.06*	-0.05*	-0.04	-0.01
	[-0.05;-0.03]	[-0.04;0.01]	[-0.04;-0.00]	[-0.10;-0.02]	[-0.09;-0.00]	[-0.08;0.00]	[-0.06;0.05]
Nr. of children 0-2	-1.42*	2.06*	-1.05*	-1.71*	-0.92	-1.60	1.71
	[-1.96;-0.88]	[0.95;3.18]	[-1.69;-0.41]	[-3.10;-0.33]	[-3.40;1.56]	[-3.42;0.22]	[-0.55;3.97]
Nr. of children 3-6	-0.50	0.52	-0.37	0.14	-2.20*	0.56	4.02*
	[-1.05;0.06]	[-0.56;1.61]	[-1.00;0.25]	[-1.66;1.94]	[-3.85;-0.55]	[-0.85;1.97]	[1.91;6.14]
Nr. of children 6-18	-0.45*	0.33	-1.06*	-0.61*	-0.17	-0.29	-0.38
	[-0.57;-0.33]	[-0.06;0.72]	[-1.22;-0.90]	[-0.99;-0.24]	[-0.59;0.25]	[-0.74;0.16]	[-1.08;0.31]
% of females 18+	-0.05	0.05	-0.10*	0.02	-0.06	-0.14	0.05
	[-0.11;0.00]	[-0.03;0.13]	[-0.17;-0.04]	[-0.14;0.19]	[-0.22;0.10]	[-0.30;0.01]	[-0.18;0.28]
% of females 25+	-0.10*	-0.13*	-0.16*	-0.02	-0.10	-0.03	-0.46*
	[-0.14;-0.05]	[-0.22;-0.04]	[-0.21;-0.10]	[-0.18;0.13]	[-0.25;0.05]	[-0.17;0.12]	[-0.79;-0.12]
% of females 65+	-0.64*	-0.42*	-0.50*	-0.24	-0.74*	-1.03*	0.06
	[-0.76;-0.51]	[-0.70;-0.14]	[-0.63;-0.36]	[-0.76;0.28]	[-1.35;-0.12]	[-1.64;-0.42]	[-0.69;0.82]
Fertility rate	3.77*	3.88*	3.46*	2.95*	2.73*	2.92*	3.32*
	[3.14;4.39]	[2.84;4.92]	[2.72;4.19]	[1.77;4.13]	[1.29;4.16]	[1.81;4.04]	[1.28;5.37]
% university entrance qual.	-0.02*	-0.01	-0.01*	-0.00	-0.00	-0.01	-0.03*
	[-0.02;-0.01]	[-0.03;0.01]	[-0.02;-0.00]	[-0.02;0.02]	[-0.03;0.02]	[-0.02;0.01]	[-0.06;-0.00]
% without formal qual.	-0.02	-0.05*	0.01	-0.01	-0.07	0.06	-0.08
	[-0.05;0.01]	[-0.10;-0.01]	[-0.02;0.05]	[-0.08;0.05]	[-0.16;0.01]	[-0.03;0.14]	[-0.17;0.02]
% students	-0.01*	-0.02*	0.00	-0.04*	-0.02*	0.01	0.01
	[-0.01;-0.00]	[-0.03;-0.01]	[-0.00;0.01]	[-0.07;-0.01]	[-0.04;-0.00]	[-0.01;0.03]	[-0.01;0.03]
% female students	-0.01*	0.00	-0.01*	-0.01	0.00	-0.00	-0.03*
	[-0.01;-0.00]	[-0.01;0.01]	[-0.01;-0.00]	[-0.02;0.01]	[-0.01;0.02]	[-0.01;0.01]	[-0.06;-0.01]
Apprentice positions	0.00	0.01	0.00	0.00	0.00	0.00	0.02
	[-0.00;0.01]	[-0.01;0.03]	[-0.00;0.01]	[-0.01;0.01]	[-0.00;0.01]	[-0.00;0.01]	[-0.06;0.10]
GDP	0.06*	0.06	0.07*	0.11*	0.08*	0.11*	0.04
	[0.05;0.08]	[-0.01;0.13]	[0.06;0.09]	[0.02;0.21]	[0.02;0.15]	[0.03;0.18]	[-0.01;0.08]
Share of female employees (%)	-0.05*	-0.03	-0.03	-0.01	-0.02	-0.01	-0.05
	[-0.07;-0.02]	[-0.08;0.01]	[-0.06;0.00]	[-0.08;0.05]	[-0.11;0.06]	[-0.14;0.12]	[-0.18;0.08]
Unemployed females per 1000	-0.05*	-0.06*	-0.02*	-0.05*	-0.05*	-0.04*	-0.02
	[-0.06;-0.05]	[-0.07;-0.05]	[-0.03;-0.01]	[-0.07;-0.02]	[-0.08;-0.02]	[-0.07;-0.02]	[-0.06;0.02]
R ²	0.24	0.43	0.26	0.23	0.23	0.25	0.29
Adj. R ²	0.15	0.35	0.18	0.13	0.13	0.15	0.19
Num. obs.	4407	847	3560	1121	1111	1438	737

* Null hypothesis value outside the confidence interval; Cluster robust standard errors, own calculations.

Table A4: Variables per Year for Germany (N=4,407)

	2007	2008	2009	2010	2011	2012	2013	2014	2015	2016	2017	Total
Female Labor Force Participation	53.56 (5.13)	54.77 (5.17)	55.29 (5.21)	56.61 (5.28)	59.07 (5.39)	60.07 (5.39)	60.62 (5.53)	61.57 (5.56)	62.69 (5.64)	63.89 (5.72)	65.08 (5.74)	59.38 (6.57)
Childcare coverage 0-2	15.66 (13.75)	17.70 (13.22)	20.42 (13.73)	23.18 (13.56)	25.85 (13.49)	27.85 (13.19)	29.57 (12.94)	31.54 (12.32)	31.34 (11.94)	31.05 (12.06)	32.33 (12.10)	26.04 (14.13)
Share of full-time slots 0-2	7.31 (10.42)	8.00 (10.47)	9.46 (11.69)	11.01 (12.47)	12.46 (13.06)	13.85 (13.10)	14.99 (13.54)	16.21 (13.93)	16.50 (13.70)	16.76 (13.85)	17.43 (14.32)	13.09 (13.30)
Childcare coverage 3-5	91.48 (5.56)	92.98 (4.67)	93.71 (4.43)	93.50 (4.08)	93.80 (3.61)	94.33 (3.33)	94.36 (3.33)	94.55 (3.37)	92.38 (3.41)	92.59 (3.42)	91.14 (3.65)	93.17 (4.10)
Share of full-time slots 3-5	25.09 (21.68)	27.21 (21.97)	29.57 (22.29)	31.46 (22.39)	33.65 (22.38)	35.76 (22.27)	37.71 (22.22)	40.47 (23.19)	41.02 (22.37)	42.38 (22.61)	42.54 (22.33)	35.16 (23.09)
Nr. of children 0-2	2.44 (0.25)	2.43 (0.25)	2.42 (0.25)	2.41 (0.24)	2.41 (0.25)	2.42 (0.25)	2.43 (0.25)	2.50 (0.25)	2.58 (0.26)	2.69 (0.26)	2.75 (0.27)	2.50 (0.28)
Nr. of children 3-6	2.59 (0.30)	2.54 (0.28)	2.50 (0.26)	2.48 (0.24)	2.50 (0.23)	2.50 (0.22)	2.50 (0.22)	2.48 (0.21)	2.53 (0.21)	2.56 (0.21)	2.62 (0.21)	2.53 (0.24)
Nr. of children 6-18	12.10 (2.13)	11.80 (2.16)	11.61 (2.05)	11.45 (1.91)	11.40 (1.74)	11.27 (1.58)	11.17 (1.43)	11.05 (1.28)	10.97 (1.13)	10.91 (1.03)	10.80 (0.93)	11.32 (1.68)
% of females 18+	48.54 (2.19)	48.44 (2.16)	48.36 (2.17)	48.30 (2.21)	48.24 (2.32)	48.19 (2.33)	48.09 (2.34)	47.87 (2.31)	46.96 (2.48)	46.90 (2.30)	46.83 (2.27)	47.89 (2.36)
% of females 25+	48.80 (2.16)	48.73 (2.09)	48.64 (2.04)	48.48 (1.98)	48.54 (1.94)	48.33 (1.85)	48.09 (1.79)	47.88 (1.74)	47.27 (1.74)	47.29 (1.67)	47.34 (1.66)	48.13 (1.97)
% of females 65+	57.92 (1.40)	57.62 (1.37)	57.37 (1.34)	57.22 (1.32)	57.38 (1.30)	57.16 (1.28)	56.94 (1.27)	56.73 (1.27)	56.53 (1.25)	56.39 (1.24)	56.24 (1.26)	57.05 (1.40)
Fertility rate	1.40 (0.10)	1.41 (0.10)	1.38 (0.10)	1.42 (0.10)	1.41 (0.10)	1.44 (0.11)	1.45 (0.11)	1.51 (0.12)	1.54 (0.12)	1.65 (0.14)	0.80 (0.09)	1.40 (0.23)
% university entrance qual.	25.83 (8.98)	27.80 (10.29)	29.53 (10.33)	29.74 (9.17)	34.40 (9.35)	32.37 (9.76)	31.92 (10.24)	31.02 (9.00)	32.25 (8.95)	32.76 (9.47)	32.43 (8.88)	30.91 (9.79)
% school leaving without certificate	7.33 (2.02)	7.07 (2.08)	6.65 (2.14)	6.44 (2.57)	6.01 (2.86)	5.80 (2.53)	5.60 (2.51)	5.63 (2.32)	5.76 (2.22)	5.97 (2.09)	6.56 (2.25)	6.26 (2.40)
%. students	21.76 (40.98)	22.75 (42.65)	23.96 (45.13)	25.09 (47.38)	26.83 (49.59)	28.32 (51.39)	30.13 (54.39)	31.26 (54.47)	31.55 (54.37)	31.60 (53.79)	32.01 (53.87)	27.75 (50.13)
% female students	23.25 (25.11)	23.73 (25.09)	23.83 (24.88)	24.92 (24.99)	24.89 (24.73)	25.33 (24.77)	25.20 (24.66)	25.94 (25.03)	26.02 (24.99)	26.11 (24.89)	26.76 (25.04)	25.09 (24.92)
Apprentice positions	98.86 (3.89)	101.17 (2.97)	101.72 (2.71)	101.83 (3.13)	103.96 (3.95)	101.08 (18.39)	103.65 (5.56)	104.60 (5.51)	105.60 (5.66)	105.92 (5.91)	106.98 (6.97)	103.21 (7.58)
Share of female employees (%)	43.19 (4.68)	43.12 (4.78)	43.26 (4.81)	43.78 (4.75)	44.07 (4.66)	43.14 (4.65)	42.60 (4.73)	42.68 (4.79)	42.73 (4.92)	42.29 (5.02)	41.96 (5.08)	42.98 (4.84)
Unemployed females per 1000	69.15 (33.29)	58.56 (30.46)	56.45 (25.92)	53.54 (23.76)	50.58 (24.54)	48.81 (23.55)	48.95 (22.35)	48.02 (21.55)	45.69 (20.56)	43.26 (19.02)	40.35 (17.62)	51.22 (25.44)

Source: German Statistical Office: Data on subsidized childcare; Federal Office for Building and Regional Planning (Indikatoren und Karten zur Raumentwicklung, INKAR); Indicators and Maps on the Spatial Development; German Federal Employment Agency: Data on female labour force participation, Mean values and standard deviations (in parentheses), own calculations.

Table A5: Variables per Year for East Germany (N=847)

	2007	2008	2009	2010	2011	2012	2013	2014	2015	2016	2017	Total
Female Labor Force Participation	60.23 (3.84)	61.45 (3.75)	62.11 (3.68)	63.18 (3.90)	65.90 (4.01)	66.80 (3.97)	67.57 (4.02)	68.41 (4.20)	69.75 (4.23)	71.27 (4.21)	72.55 (4.16)	66.29 (5.59)
Childcare coverage 0-2	41.86 (7.36)	42.65 (6.75)	46.40 (6.49)	48.58 (6.17)	50.82 (6.01)	52.12 (5.21)	53.36 (4.72)	54.12 (4.60)	53.14 (4.21)	53.15 (3.89)	54.31 (4.23)	50.05 (7.01)
Share of full-time slots 0-2	27.67 (5.65)	28.36 (5.42)	32.26 (5.54)	35.22 (5.55)	37.57 (5.98)	38.87 (5.24)	40.71 (5.33)	42.34 (6.10)	41.92 (5.85)	42.45 (6.03)	43.83 (6.29)	37.38 (7.92)
Childcare coverage 3-5	94.57 (2.90)	95.48 (2.43)	95.66 (2.38)	95.10 (2.51)	94.86 (2.53)	95.50 (2.38)	95.65 (2.44)	96.36 (2.54)	93.88 (3.23)	94.79 (2.54)	93.43 (2.80)	95.03 (2.73)
Share of full-time slots 3-5	61.98 (17.29)	64.26 (16.33)	66.61 (16.12)	68.05 (15.62)	69.56 (14.95)	70.53 (13.46)	72.04 (12.72)	77.03 (13.07)	75.71 (11.79)	77.10 (12.63)	76.37 (12.71)	70.84 (15.14)
Nr. of children 0-2	2.19 (0.24)	2.24 (0.26)	2.28 (0.27)	2.32 (0.28)	2.34 (0.29)	2.37 (0.29)	2.36 (0.29)	2.41 (0.29)	2.47 (0.29)	2.53 (0.29)	2.55 (0.29)	2.37 (0.30)
Nr. of children 3-6	2.21 (0.20)	2.22 (0.21)	2.23 (0.20)	2.25 (0.21)	2.34 (0.22)	2.39 (0.23)	2.42 (0.24)	2.44 (0.23)	2.50 (0.23)	2.51 (0.22)	2.56 (0.22)	2.37 (0.25)
Nr. of children 6-18	8.67 (0.78)	8.25 (0.76)	8.26 (0.76)	8.41 (0.77)	8.71 (0.77)	8.93 (0.77)	9.16 (0.77)	9.35 (0.75)	9.59 (0.71)	9.78 (0.71)	9.89 (0.70)	9.00 (0.94)
% of females 18+	46.80 (2.21)	46.86 (2.28)	46.92 (2.39)	47.07 (2.48)	47.10 (2.59)	47.24 (2.62)	47.27 (2.69)	47.09 (2.66)	45.71 (2.89)	45.96 (2.52)	45.85 (2.48)	46.72 (2.58)
% of females 25+	45.58 (1.67)	45.67 (1.67)	45.81 (1.73)	45.89 (1.77)	46.30 (1.78)	46.51 (1.74)	46.65 (1.70)	46.74 (1.69)	46.40 (1.64)	46.80 (1.67)	47.04 (1.66)	46.31 (1.76)
% of females 65+	59.13 (0.89)	58.79 (0.89)	58.52 (0.87)	58.38 (0.87)	58.37 (0.87)	58.19 (0.88)	58.00 (0.88)	57.80 (0.89)	57.56 (0.89)	57.34 (0.91)	57.14 (0.95)	58.11 (1.06)
Fertility rate	1.37 (0.07)	1.42 (0.07)	1.41 (0.08)	1.47 (0.07)	1.48 (0.08)	1.52 (0.09)	1.53 (0.11)	1.59 (0.11)	1.61 (0.12)	1.72 (0.14)	0.84 (0.10)	1.45 (0.24)
% university entrance qual.	35.76 (6.48)	40.98 (7.93)	41.89 (8.04)	35.82 (8.79)	32.72 (7.71)	34.55 (9.81)	31.03 (7.78)	31.44 (7.25)	33.24 (7.28)	33.81 (7.40)	34.48 (8.24)	35.06 (8.56)
% school leaving without certificate	8.61 (2.09)	8.88 (2.23)	8.95 (2.51)	10.00 (2.91)	10.30 (3.04)	9.14 (2.88)	9.28 (2.38)	8.41 (2.26)	8.29 (2.22)	8.42 (2.05)	8.80 (2.25)	9.01 (2.52)
%. students	19.50 (34.06)	20.26 (34.99)	22.13 (37.26)	23.95 (39.59)	25.88 (40.60)	28.29 (43.24)	30.47 (45.86)	32.33 (48.97)	33.26 (50.63)	33.07 (48.86)	32.38 (47.13)	27.41 (43.24)
% female students	26.03 (26.07)	27.05 (26.23)	26.09 (25.72)	27.75 (26.13)	26.61 (25.86)	26.71 (25.87)	26.28 (25.21)	25.90 (25.40)	26.82 (25.61)	27.30 (25.38)	28.19 (25.09)	26.79 (25.55)
Apprentice positions	97.05 (2.61)	100.40 (2.48)	101.43 (2.87)	101.37 (4.44)	104.29 (4.71)	104.75 (5.94)	105.01 (7.50)	106.59 (6.55)	107.39 (5.83)	107.35 (5.40)	107.25 (5.17)	103.90 (6.03)
Share of female employees (%)	39.65 (4.91)	39.65 (5.03)	39.97 (5.23)	41.09 (5.23)	42.21 (5.15)	41.48 (5.10)	40.75 (5.41)	40.40 (5.60)	40.18 (5.70)	39.40 (5.70)	39.03 (5.77)	40.35 (5.40)
Unemployed females per 1000	122.28 (26.88)	106.44 (24.31)	96.46 (20.04)	87.94 (18.57)	84.85 (20.35)	80.39 (19.76)	77.12 (18.60)	73.60 (18.00)	69.00 (17.33)	62.64 (15.86)	55.52 (14.16)	83.29 (27.03)

Source: German Statistical Office: Data on subsidized childcare; Federal Office for Building and Regional Planning (Indikatoren und Karten zur Raumentwicklung, INKAR): Indicators and Maps on the Spatial Development; German Federal Employment Agency: Data on female labour force participation, Mean values and standard deviations (in parentheses), own calculations.

Table A6: Variables per Year for West Germany (N=3,560)

	2007	2008	2009	2010	2011	2012	2013	2014	2015	2016	2017	Total
Female Labor Force Participation	51.98 (4.00)	53.18 (4.08)	53.67 (4.09)	55.05 (4.27)	57.44 (4.30)	58.47 (4.35)	58.97 (4.45)	59.94 (4.50)	61.01 (4.52)	62.14 (4.50)	63.29 (4.49)	57.73 (5.65)
Childcare coverage 0-2	9.44 (4.36)	11.76 (4.67)	14.24 (4.93)	17.14 (5.33)	19.91 (5.72)	22.08 (5.93)	23.91 (5.92)	26.18 (5.71)	26.14 (5.62)	25.80 (5.70)	27.06 (5.77)	20.33 (8.11)
Share of full-time slots 0-2	2.48 (2.17)	3.15 (2.51)	4.04 (2.95)	5.26 (3.52)	6.49 (4.12)	7.91 (4.62)	8.88 (5.00)	9.99 (5.47)	10.44 (5.75)	10.65 (5.85)	11.10 (6.09)	7.30 (5.48)
Childcare coverage 3-5	90.75 (5.79)	92.38 (4.88)	93.24 (4.68)	93.13 (4.29)	93.54 (3.78)	94.06 (3.47)	94.06 (3.44)	94.12 (3.41)	92.03 (3.35)	92.07 (3.40)	90.59 (3.62)	92.73 (4.25)
Share of full-time slots 3-5	16.32 (10.48)	18.41 (11.41)	20.76 (12.21)	22.76 (12.98)	25.12 (13.68)	27.50 (14.65)	29.55 (15.03)	31.79 (15.22)	32.75 (15.19)	34.13 (15.49)	34.43 (15.46)	26.67 (15.18)
Nr. of children 0-2	2.50 (0.22)	2.48 (0.22)	2.46 (0.23)	2.44 (0.23)	2.43 (0.24)	2.43 (0.24)	2.45 (0.23)	2.52 (0.24)	2.60 (0.24)	2.73 (0.24)	2.79 (0.25)	2.53 (0.26)
Nr. of children 3-6	2.68 (0.24)	2.62 (0.23)	2.57 (0.22)	2.53 (0.21)	2.54 (0.21)	2.53 (0.21)	2.52 (0.21)	2.50 (0.21)	2.54 (0.20)	2.57 (0.21)	2.64 (0.21)	2.57 (0.22)
Nr. of children 6-18	12.91 (1.42)	12.65 (1.38)	12.40 (1.33)	12.17 (1.28)	12.05 (1.21)	11.83 (1.15)	11.64 (1.09)	11.45 (1.02)	11.30 (0.95)	11.18 (0.90)	11.02 (0.85)	11.87 (1.30)
% of females 18+	48.95 (1.98)	48.82 (1.95)	48.71 (1.97)	48.59 (2.04)	48.52 (2.17)	48.41 (2.20)	48.29 (2.21)	48.06 (2.18)	47.26 (2.28)	47.12 (2.19)	47.06 (2.15)	48.16 (2.22)
% of females 25+	49.57 (1.44)	49.46 (1.41)	49.32 (1.44)	49.10 (1.45)	49.07 (1.56)	48.76 (1.59)	48.43 (1.64)	48.15 (1.64)	47.48 (1.70)	47.41 (1.66)	47.41 (1.66)	48.56 (1.76)
% of females 65+	57.63 (1.34)	57.34 (1.32)	57.10 (1.29)	56.95 (1.26)	57.14 (1.27)	56.91 (1.24)	56.69 (1.22)	56.48 (1.21)	56.29 (1.20)	56.16 (1.21)	56.03 (1.23)	56.79 (1.34)
Fertility rate	1.40 (0.11)	1.40 (0.10)	1.38 (0.10)	1.41 (0.10)	1.40 (0.10)	1.42 (0.10)	1.43 (0.11)	1.49 (0.11)	1.52 (0.11)	1.63 (0.13)	0.79 (0.08)	1.39 (0.23)
% university entrance qual.	23.47 (7.80)	24.67 (8.07)	26.59 (8.48)	28.30 (8.67)	34.80 (9.67)	31.85 (9.69)	32.13 (10.74)	30.92 (9.38)	32.01 (9.30)	32.51 (9.89)	31.94 (8.97)	29.92 (9.80)
% school leaving without certificate	7.03 (1.88)	6.64 (1.79)	6.10 (1.63)	5.60 (1.58)	4.99 (1.58)	5.01 (1.63)	4.73 (1.57)	4.97 (1.79)	5.16 (1.75)	5.39 (1.63)	6.03 (1.89)	5.60 (1.85)
%. students	22.30 (42.48)	23.34 (44.31)	24.40 (46.85)	25.36 (49.10)	27.06 (51.54)	28.32 (53.20)	30.05 (56.29)	31.01 (55.76)	31.15 (55.30)	31.26 (54.95)	31.92 (55.43)	27.83 (51.63)
% female students	22.59 (24.87)	22.94 (24.78)	23.29 (24.68)	24.24 (24.71)	24.48 (24.47)	25.00 (24.53)	24.94 (24.56)	25.95 (24.98)	25.83 (24.88)	25.83 (24.80)	26.42 (25.05)	24.68 (24.75)
Apprentice positions	99.30 (4.02)	101.35 (3.05)	101.79 (2.67)	101.94 (2.72)	103.88 (3.76)	100.21 (20.16)	103.33 (4.94)	104.13 (5.13)	105.17 (5.55)	105.58 (5.98)	106.91 (7.35)	103.05 (7.90)
Share of female employees (%)	44.03 (4.22)	43.95 (4.34)	44.04 (4.36)	44.42 (4.40)	44.51 (4.43)	43.53 (4.45)	43.04 (4.45)	43.23 (4.41)	43.34 (4.52)	42.97 (4.60)	42.66 (4.64)	43.61 (4.47)
Unemployed females per 1000	56.52 (19.23)	47.18 (18.27)	46.95 (16.29)	45.36 (16.40)	42.43 (17.37)	41.31 (17.34)	42.25 (17.41)	41.94 (17.48)	40.14 (17.10)	38.66 (16.68)	36.71 (16.40)	43.59 (18.01)

Source: German Statistical Office: Data on subsidized childcare; Federal Office for Building and Regional Planning (Indikatoren und Karten zur Raumentwicklung, INKAR): Indicators and Maps on the Spatial Development; German Federal Employment Agency: Data on female labour force participation, Mean values and standard deviations (in parentheses), own calculations.

Table A7: Variables per Year for Rural Areas (N=1,121)

	2007	2008	2009	2010	2011	2012	2013	2014	2015	2016	2017	Total
Female Labor Force Participation	54.54 (5.47)	55.85 (5.47)	56.51 (5.51)	57.94 (5.43)	60.33 (5.51)	61.38 (5.40)	62.13 (5.51)	63.07 (5.53)	64.16 (5.60)	65.37 (5.74)	66.52 (5.89)	60.71 (6.73)
Childcare coverage 0-2	17.04 (15.53)	18.93 (14.80)	21.96 (15.42)	24.88 (15.40)	27.37 (14.96)	29.30 (14.52)	31.05 (14.32)	32.78 (13.68)	32.08 (13.32)	31.68 (13.47)	33.07 (13.40)	27.28 (15.41)
Share of full-time slots 0-2	7.76 (11.46)	8.40 (11.61)	9.89 (12.91)	11.40 (13.92)	12.68 (14.28)	14.17 (14.43)	15.31 (14.96)	16.56 (15.75)	16.41 (15.28)	16.77 (15.48)	17.46 (15.92)	13.35 (14.59)
Childcare coverage 3-5	91.21 (6.45)	92.71 (5.32)	93.38 (5.08)	93.29 (4.85)	93.31 (4.14)	93.87 (3.66)	94.22 (3.56)	94.36 (3.73)	92.12 (3.44)	92.36 (3.58)	90.89 (3.87)	92.88 (4.55)
Share of full-time slots 3-5	24.34 (22.87)	26.13 (23.49)	27.94 (23.94)	29.57 (24.26)	31.41 (23.87)	33.43 (23.84)	35.46 (24.10)	38.45 (25.51)	38.88 (24.54)	40.06 (24.75)	40.29 (24.43)	33.27 (24.67)
Nr. of children 0-2	2.41 (0.28)	2.41 (0.26)	2.40 (0.25)	2.38 (0.24)	2.36 (0.23)	2.38 (0.23)	2.40 (0.23)	2.45 (0.24)	2.53 (0.24)	2.64 (0.26)	2.70 (0.27)	2.46 (0.27)
Nr. of children 3-6	2.61 (0.36)	2.55 (0.34)	2.51 (0.31)	2.47 (0.27)	2.49 (0.25)	2.49 (0.24)	2.49 (0.23)	2.47 (0.23)	2.52 (0.22)	2.54 (0.22)	2.62 (0.23)	2.52 (0.27)
Nr. of children 6-18	12.34 (2.37)	12.02 (2.41)	11.81 (2.30)	11.65 (2.13)	11.58 (1.95)	11.45 (1.77)	11.33 (1.60)	11.20 (1.43)	11.11 (1.26)	11.02 (1.14)	10.90 (1.03)	11.49 (1.87)
% of females 18+	47.88 (1.81)	47.81 (1.79)	47.74 (1.80)	47.63 (1.80)	47.62 (1.88)	47.58 (1.88)	47.44 (1.89)	47.23 (1.84)	46.24 (1.95)	46.14 (1.69)	46.10 (1.55)	47.22 (1.92)
% of females 25+	48.35 (2.14)	48.28 (2.05)	48.12 (1.97)	47.92 (1.80)	48.04 (1.68)	47.85 (1.61)	47.66 (1.47)	47.43 (1.42)	46.92 (1.43)	46.92 (1.32)	47.00 (1.30)	47.68 (1.75)
% of females 65+	57.87 (1.41)	57.54 (1.39)	57.29 (1.36)	57.14 (1.33)	57.24 (1.35)	57.01 (1.35)	56.79 (1.33)	56.56 (1.34)	56.32 (1.32)	56.14 (1.32)	55.98 (1.33)	56.90 (1.46)
Fertility rate	1.42 (0.10)	1.43 (0.10)	1.40 (0.10)	1.44 (0.10)	1.43 (0.10)	1.46 (0.11)	1.47 (0.11)	1.53 (0.12)	1.56 (0.12)	1.67 (0.13)	0.81 (0.07)	1.42 (0.23)
% university entrance qual.	23.53 (9.88)	25.22 (11.03)	26.62 (11.21)	26.51 (9.35)	32.65 (10.21)	28.37 (9.27)	27.46 (8.83)	27.37 (8.28)	28.53 (8.70)	29.36 (9.47)	29.07 (9.15)	27.70 (9.84)
% school leaving without certificate	7.52 (1.85)	7.31 (2.18)	6.79 (2.21)	6.76 (2.90)	6.30 (3.04)	6.19 (2.75)	5.93 (2.52)	5.74 (2.27)	6.09 (2.32)	6.19 (2.13)	6.85 (2.23)	6.51 (2.48)
% students	12.68 (26.71)	13.50 (27.57)	14.43 (29.21)	15.69 (30.85)	17.17 (32.76)	18.68 (35.22)	20.13 (37.83)	21.09 (38.97)	21.43 (39.55)	21.28 (39.08)	21.21 (39.19)	17.94 (34.59)
% female students	19.06 (25.01)	20.92 (25.49)	19.60 (24.78)	21.63 (25.59)	20.85 (24.62)	20.92 (24.63)	20.31 (24.18)	20.06 (24.32)	20.31 (24.57)	20.52 (24.72)	21.65 (25.25)	20.53 (24.74)
Apprentice positions	98.80 (3.67)	101.29 (2.41)	102.00 (2.65)	101.70 (3.39)	104.26 (4.00)	102.06 (18.57)	104.39 (5.28)	105.72 (5.11)	106.71 (5.13)	107.37 (5.67)	108.88 (6.78)	103.92 (7.66)
Share of female employees (%)	42.31 (4.68)	42.15 (4.78)	42.22 (4.79)	42.88 (4.87)	43.08 (4.81)	42.17 (4.60)	41.55 (4.60)	41.59 (4.68)	41.56 (4.66)	40.92 (4.76)	40.56 (4.99)	41.91 (4.78)
Unemployed females per 1000	69.52 (36.27)	58.57 (33.20)	55.66 (27.94)	52.07 (25.39)	49.06 (26.27)	47.04 (25.05)	46.67 (23.22)	45.46 (22.21)	42.74 (20.71)	40.17 (18.87)	37.32 (17.16)	49.48 (27.05)

Source: German Statistical Office: Data on subsidized childcare; Federal Office for Building and Regional Planning (Indikatoren und Karten zur Raumentwicklung, INKAR): Indicators and Maps on the Spatial Development; German Federal Employment Agency: Data on female labour force participation, Mean values and standard deviations (in parentheses), own calculations.

Table A8: Variables per Year for Agglomerations (N=1,111)

	2007	2008	2009	2010	2011	2012	2013	2014	2015	2016	2017	Total
Female Labor Force Participation	51.10 (5.05)	52.17 (5.09)	52.41 (5.14)	53.38 (5.21)	55.31 (5.18)	56.02 (5.29)	56.19 (5.41)	56.91 (5.39)	58.04 (5.56)	59.29 (5.63)	60.48 (5.56)	55.57 (6.03)
Childcare coverage 0-2	16.03 (12.53)	17.57 (12.01)	19.62 (11.82)	21.87 (11.41)	24.34 (11.76)	26.29 (11.78)	27.90 (11.62)	30.26 (10.93)	31.17 (10.28)	31.03 (10.49)	31.99 (10.59)	25.28 (12.60)
Share of full-time slots 0-2	8.75 (9.81)	9.63 (9.43)	11.09 (9.93)	12.79 (10.48)	14.57 (11.26)	16.20 (11.32)	17.36 (11.48)	19.08 (11.77)	19.73 (11.47)	20.06 (11.68)	20.69 (11.94)	15.45 (11.68)
Childcare coverage 3-5	89.57 (4.60)	91.14 (4.23)	91.77 (4.31)	91.51 (4.11)	91.95 (3.28)	92.97 (3.25)	92.81 (3.26)	93.20 (3.67)	91.44 (4.03)	91.49 (4.10)	89.68 (4.46)	91.60 (4.10)
Share of full-time slots 3-5	33.21 (17.65)	36.16 (17.72)	39.05 (17.85)	41.33 (18.47)	43.56 (17.90)	45.74 (17.63)	47.48 (17.18)	50.50 (18.51)	51.32 (17.75)	53.13 (18.24)	52.97 (17.62)	44.95 (18.92)
Nr. of children 0-2	2.58 (0.23)	2.60 (0.23)	2.63 (0.24)	2.63 (0.25)	2.65 (0.27)	2.66 (0.28)	2.68 (0.27)	2.76 (0.25)	2.84 (0.24)	2.96 (0.23)	3.01 (0.23)	2.73 (0.28)
Nr. of children 3-6	2.51 (0.21)	2.50 (0.20)	2.50 (0.19)	2.51 (0.20)	2.58 (0.20)	2.58 (0.20)	2.59 (0.21)	2.57 (0.21)	2.62 (0.21)	2.65 (0.21)	2.72 (0.21)	2.57 (0.21)
Nr. of children 6-18	10.59 (1.58)	10.38 (1.59)	10.26 (1.50)	10.17 (1.40)	10.22 (1.26)	10.18 (1.16)	10.17 (1.09)	10.17 (1.00)	10.22 (0.93)	10.27 (0.91)	10.26 (0.88)	10.26 (1.23)
% of females 18+	51.30 (2.34)	51.16 (2.41)	51.11 (2.46)	51.10 (2.44)	51.09 (2.68)	51.02 (2.74)	50.89 (2.76)	50.68 (2.69)	49.84 (2.93)	49.53 (2.84)	49.42 (2.86)	50.65 (2.72)
% of females 25+	50.01 (1.80)	50.01 (1.74)	50.05 (1.71)	49.93 (1.79)	49.92 (2.17)	49.72 (2.14)	49.53 (2.15)	49.28 (2.23)	48.74 (2.27)	48.69 (2.19)	48.65 (2.19)	49.50 (2.10)
% of females 65+	59.04 (1.10)	58.71 (1.08)	58.44 (1.03)	58.25 (1.04)	58.51 (0.90)	58.29 (0.86)	58.10 (0.84)	57.93 (0.81)	57.80 (0.77)	57.71 (0.75)	57.63 (0.72)	58.22 (1.00)
Fertility rate	1.33 (0.12)	1.34 (0.11)	1.33 (0.11)	1.36 (0.11)	1.34 (0.12)	1.35 (0.12)	1.36 (0.11)	1.42 (0.12)	1.44 (0.13)	1.54 (0.16)	0.76 (0.15)	1.33 (0.23)
% university entrance qual.	33.16 (7.61)	35.06 (8.71)	36.45 (8.46)	37.57 (7.85)	40.63 (8.23)	40.90 (8.84)	42.32 (8.12)	40.10 (7.54)	41.05 (7.04)	41.64 (7.74)	40.41 (6.96)	39.03 (8.39)
% school leaving without certificate	7.96 (2.38)	7.41 (2.08)	7.06 (1.98)	6.81 (2.30)	6.29 (2.62)	6.11 (2.34)	5.81 (2.48)	6.27 (2.26)	6.22 (2.17)	6.07 (2.15)	7.07 (2.44)	6.64 (2.37)
%. students	73.28 (62.89)	75.96 (66.28)	79.66 (71.29)	82.88 (76.32)	86.48 (79.40)	89.62 (81.08)	94.66 (85.66)	97.58 (82.26)	97.87 (80.87)	98.08 (79.13)	97.71 (79.22)	88.53 (77.06)
% female students	41.32 (17.60)	41.34 (17.68)	42.09 (16.54)	42.63 (16.11)	42.35 (15.84)	43.95 (14.83)	44.11 (14.72)	44.53 (14.84)	44.71 (14.42)	44.87 (14.26)	45.21 (14.24)	43.37 (15.56)
Apprentice positions	97.72 (3.98)	100.14 (3.17)	100.77 (2.72)	100.95 (2.36)	102.29 (3.33)	102.38 (4.42)	101.37 (4.59)	101.94 (5.23)	102.72 (5.11)	102.83 (5.49)	103.27 (7.13)	101.49 (4.74)
Share of female employees (%)	47.45 (4.22)	47.50 (4.13)	47.70 (4.03)	48.01 (3.65)	48.41 (3.77)	47.53 (3.89)	47.27 (3.97)	47.40 (3.87)	47.68 (4.02)	47.51 (3.92)	47.29 (3.84)	47.61 (3.93)
Unemployed females per 1000	77.21 (22.47)	67.99 (21.47)	65.71 (18.95)	63.88 (18.77)	62.31 (19.67)	60.99 (19.25)	61.38 (19.03)	61.22 (18.93)	59.27 (18.48)	56.93 (18.40)	53.95 (18.00)	62.80 (20.18)

Source: German Statistical Office: Data on subsidized childcare; Federal Office for Building and Regional Planning (Indikatoren und Karten zur Raumentwicklung, INKAR): Indicators and Maps on the Spatial Development; German Federal Employment Agency: Data on female labour force participation, Mean values and standard deviations (in parentheses), own calculations.

Table A9: Variables per Year for Urban Areas (N=1,438)

	2007	2008	2009	2010	2011	2012	2013	2014	2015	2016	2017	Total
Female Labor Force Participation	54.93 (5.55)	56.16 (5.48)	56.92 (5.33)	58.38 (5.37)	60.99 (5.53)	62.15 (5.37)	62.85 (5.39)	63.97 (5.29)	65.32 (5.34)	66.62 (5.39)	67.87 (5.26)	61.47 (6.80)
Childcare coverage 0-2	19.75 (17.04)	21.70 (16.44)	24.91 (17.13)	27.71 (16.85)	30.55 (16.63)	32.55 (16.04)	34.41 (15.40)	35.89 (15.12)	35.40 (15.02)	34.92 (15.08)	36.17 (15.09)	30.35 (16.92)
Share of full-time slots 0-2	10.37 (12.66)	10.85 (12.92)	12.74 (14.71)	14.24 (15.65)	15.68 (16.57)	16.80 (16.55)	18.02 (17.01)	18.91 (17.36)	19.28 (17.27)	19.32 (17.36)	20.08 (17.94)	16.02 (16.37)
Childcare coverage 3-5	91.23 (5.88)	92.77 (5.10)	93.53 (4.61)	93.61 (3.91)	94.06 (3.68)	94.64 (3.43)	94.60 (3.46)	95.00 (3.29)	92.89 (3.61)	93.16 (3.36)	91.71 (3.38)	93.38 (4.20)
Share of full-time slots 3-5	29.08 (27.05)	30.52 (27.31)	32.36 (27.64)	33.74 (27.27)	35.64 (27.38)	37.47 (26.96)	39.30 (26.89)	42.45 (27.85)	42.65 (26.69)	43.47 (26.81)	43.49 (26.53)	37.28 (27.49)
Nr. of children 0-2	2.31 (0.23)	2.29 (0.20)	2.29 (0.20)	2.28 (0.18)	2.27 (0.17)	2.28 (0.17)	2.28 (0.17)	2.34 (0.18)	2.41 (0.19)	2.52 (0.20)	2.56 (0.22)	2.35 (0.21)
Nr. of children 3-6	2.48 (0.31)	2.44 (0.27)	2.40 (0.24)	2.37 (0.22)	2.38 (0.19)	2.38 (0.19)	2.39 (0.18)	2.37 (0.17)	2.42 (0.17)	2.44 (0.17)	2.51 (0.17)	2.42 (0.22)
Nr. of children 6-18	11.75 (2.37)	11.38 (2.44)	11.19 (2.31)	11.07 (2.12)	11.02 (1.90)	10.94 (1.69)	10.86 (1.48)	10.77 (1.30)	10.71 (1.11)	10.67 (0.98)	10.56 (0.86)	10.99 (1.80)
% of females 18+	47.30 (1.70)	47.20 (1.60)	47.13 (1.58)	47.11 (1.56)	46.97 (1.59)	47.00 (1.62)	47.04 (1.64)	46.85 (1.55)	45.91 (1.90)	46.05 (1.58)	45.96 (1.59)	46.77 (1.70)
% of females 25+	47.50 (2.24)	47.41 (2.12)	47.38 (2.04)	47.26 (1.93)	47.36 (1.85)	47.17 (1.58)	47.00 (1.57)	46.94 (1.44)	46.35 (1.39)	46.39 (1.31)	46.55 (1.35)	47.03 (1.78)
% of females 65+	58.11 (1.24)	57.82 (1.25)	57.56 (1.23)	57.42 (1.24)	57.45 (1.22)	57.20 (1.22)	56.95 (1.22)	56.69 (1.23)	56.45 (1.22)	56.23 (1.19)	56.02 (1.21)	57.08 (1.38)
Fertility rate	1.40 (0.09)	1.41 (0.09)	1.39 (0.10)	1.43 (0.08)	1.42 (0.09)	1.46 (0.09)	1.48 (0.11)	1.53 (0.12)	1.56 (0.11)	1.68 (0.13)	0.81 (0.06)	1.42 (0.23)
% university entrance qual.	24.52 (8.87)	27.18 (11.60)	28.79 (11.17)	27.88 (8.78)	33.09 (8.23)	27.97 (8.25)	26.46 (6.57)	26.81 (6.39)	28.31 (6.46)	29.09 (7.31)	29.16 (7.11)	28.11 (8.63)
% school leaving without certificate	7.82 (2.20)	7.76 (2.27)	7.33 (2.56)	7.33 (3.04)	6.90 (3.58)	6.59 (3.12)	6.42 (3.13)	6.23 (2.99)	6.30 (2.62)	6.50 (2.40)	6.96 (2.53)	6.92 (2.84)
%. students	8.58 (18.97)	8.94 (19.48)	9.68 (21.15)	10.34 (22.59)	11.70 (25.28)	12.61 (27.26)	13.66 (29.42)	14.47 (30.99)	14.68 (31.14)	14.64 (30.64)	14.72 (29.84)	12.18 (26.44)
% female students	15.50 (23.85)	14.75 (23.06)	15.01 (22.81)	15.35 (22.72)	15.25 (22.69)	15.36 (22.67)	15.32 (22.65)	16.16 (22.85)	17.19 (23.46)	17.61 (23.75)	19.15 (24.44)	16.06 (23.12)
Apprentice positions	99.31 (4.36)	101.43 (2.38)	102.00 (2.52)	102.54 (3.84)	105.02 (4.63)	99.74 (23.39)	105.17 (7.28)	106.31 (6.38)	107.60 (6.54)	107.88 (6.47)	109.01 (7.32)	104.18 (9.31)
Share of female employees (%)	41.68 (4.56)	41.71 (4.85)	41.82 (4.91)	42.38 (4.93)	42.64 (4.52)	41.87 (4.41)	41.13 (4.62)	41.17 (4.76)	40.97 (4.90)	40.45 (5.04)	39.93 (4.94)	41.43 (4.81)
Unemployed females per 1000	82.57 (41.13)	69.12 (37.79)	64.98 (31.95)	59.93 (28.93)	56.45 (30.02)	53.97 (28.59)	53.33 (26.78)	51.36 (25.21)	48.71 (23.81)	45.25 (20.94)	41.15 (18.43)	56.99 (31.19)

Source: German Statistical Office: Data on subsidized childcare; Federal Office for Building and Regional Planning (Indikatoren und Karten zur Raumentwicklung, INKAR); Indicators and Maps on the Spatial Development; German Federal Employment Agency: Data on female labour force participation, Mean values and standard deviations (in parentheses), own calculations.

Table A10: Variables per Year for Metropolitan Areas (N=737)

	2007	2008	2009	2010	2011	2012	2013	2014	2015	2016	2017	Total
Female Labor Force Participation	53.01 (3.94)	54.17 (4.08)	54.57 (4.10)	55.85 (4.13)	58.51 (4.13)	59.52 (4.11)	60.00 (4.14)	60.92 (4.14)	61.90 (4.14)	62.98 (4.15)	64.14 (4.20)	58.68 (5.46)
Childcare coverage 0-2	11.24 (7.54)	13.69 (7.47)	16.15 (7.85)	19.01 (7.74)	21.79 (8.11)	23.87 (8.15)	25.50 (8.15)	27.86 (7.35)	27.72 (6.89)	27.57 (7.15)	28.86 (7.24)	22.10 (9.64)
Share of full-time slots 0-2	3.86 (6.26)	4.63 (6.26)	5.75 (7.11)	7.29 (7.70)	8.71 (8.12)	10.11 (8.13)	11.17 (8.67)	12.36 (8.75)	12.79 (8.65)	13.06 (8.83)	13.59 (9.25)	9.38 (8.69)
Childcare coverage 3-5	92.87 (4.65)	94.28 (3.55)	95.08 (3.28)	94.61 (3.06)	94.91 (2.76)	95.15 (2.73)	95.08 (2.80)	95.02 (2.77)	92.67 (2.73)	92.88 (2.80)	91.66 (2.96)	94.03 (3.36)
Share of full-time slots 3-5	18.40 (14.99)	20.90 (15.20)	23.80 (15.63)	26.08 (15.91)	28.76 (16.61)	31.12 (16.92)	33.21 (16.90)	35.38 (17.14)	36.16 (16.75)	37.83 (17.01)	38.10 (16.90)	29.96 (17.60)
Nr. of children 0-2	2.49 (0.22)	2.47 (0.21)	2.45 (0.21)	2.43 (0.20)	2.43 (0.21)	2.44 (0.21)	2.45 (0.20)	2.51 (0.20)	2.60 (0.20)	2.73 (0.19)	2.79 (0.20)	2.53 (0.23)
Nr. of children 3-6	2.70 (0.24)	2.64 (0.23)	2.58 (0.22)	2.55 (0.22)	2.57 (0.21)	2.56 (0.20)	2.55 (0.20)	2.53 (0.20)	2.57 (0.19)	2.60 (0.19)	2.67 (0.19)	2.59 (0.21)
Nr. of children 6-18	12.96 (1.39)	12.69 (1.40)	12.46 (1.33)	12.24 (1.26)	12.17 (1.16)	11.96 (1.07)	11.79 (0.99)	11.61 (0.93)	11.45 (0.84)	11.35 (0.78)	11.20 (0.73)	11.99 (1.23)
% of females 18+	48.61 (1.33)	48.50 (1.26)	48.39 (1.29)	48.31 (1.45)	48.26 (1.58)	48.13 (1.63)	47.98 (1.70)	47.74 (1.75)	46.84 (1.82)	46.81 (1.84)	46.74 (1.83)	47.85 (1.74)
% of females 25+	49.55 (1.58)	49.46 (1.51)	49.31 (1.50)	49.13 (1.43)	49.14 (1.31)	48.87 (1.30)	48.53 (1.26)	48.24 (1.28)	47.50 (1.30)	47.56 (1.30)	47.54 (1.35)	48.62 (1.57)
% of females 65+	57.23 (1.21)	56.97 (1.19)	56.75 (1.17)	56.60 (1.15)	56.84 (1.12)	56.66 (1.10)	56.47 (1.09)	56.29 (1.06)	56.11 (1.00)	56.02 (0.97)	55.91 (0.95)	56.53 (1.16)
Fertility rate	1.41 (0.08)	1.42 (0.08)	1.39 (0.08)	1.42 (0.09)	1.43 (0.08)	1.44 (0.09)	1.45 (0.10)	1.51 (0.10)	1.55 (0.09)	1.66 (0.10)	0.80 (0.05)	1.41 (0.22)
% university entrance qual.	24.88 (6.95)	26.56 (7.41)	28.81 (8.15)	29.68 (7.62)	33.57 (8.79)	34.51 (8.04)	34.30 (9.75)	32.46 (8.20)	33.66 (8.11)	33.69 (8.61)	33.51 (7.92)	31.42 (8.76)
% school leaving without certificate	6.48 (1.45)	6.17 (1.45)	5.79 (1.46)	5.33 (1.43)	4.95 (1.64)	4.73 (1.30)	4.61 (1.44)	4.76 (1.36)	4.87 (1.45)	5.35 (1.58)	5.76 (1.65)	5.34 (1.59)
%. students	12.68 (26.06)	13.41 (26.93)	13.93 (27.42)	14.26 (27.26)	15.55 (28.78)	16.63 (30.26)	17.68 (31.81)	18.25 (32.26)	18.45 (32.62)	18.77 (32.65)	19.92 (33.69)	16.31 (30.07)
% female students	23.28 (25.11)	23.88 (25.21)	24.62 (25.32)	25.84 (25.34)	26.57 (25.35)	26.96 (25.21)	26.97 (25.11)	28.59 (25.85)	27.68 (25.60)	27.45 (25.11)	27.20 (25.10)	26.27 (25.26)
Apprentice positions	99.15 (3.53)	101.40 (3.53)	101.77 (2.81)	101.82 (2.48)	103.76 (3.33)	100.70 (18.37)	103.06 (4.05)	103.77 (4.49)	104.66 (4.78)	104.87 (4.93)	105.80 (5.65)	102.79 (7.01)
Share of female employees (%)	42.87 (3.69)	42.74 (3.69)	42.92 (3.71)	43.41 (3.73)	43.71 (3.71)	42.62 (3.90)	42.15 (3.73)	42.29 (3.77)	42.47 (3.85)	42.09 (3.80)	41.88 (3.75)	42.65 (3.78)
Unemployed females per 1000	54.28 (20.73)	45.51 (18.95)	45.69 (16.54)	44.40 (15.44)	41.17 (15.39)	39.94 (14.87)	40.93 (14.78)	40.63 (14.64)	38.70 (14.17)	37.11 (13.49)	34.98 (12.88)	42.14 (16.51)

Source: German Statistical Office: Data on subsidized childcare; Federal Office for Building and Regional Planning (Indikatoren und Karten zur Raumentwicklung, INKAR): Indicators and Maps on the Spatial Development; German Federal Employment Agency: Data on female labour force participation, Mean values and standard deviations (in parentheses), own calculations.